

APCH CRS	Rwy Idg	N/A
018°	TDZE	N/A
	Arpt Elev	467

AL-2326 (USAF)

CAPE ROMANZOF LRRS (PACZ)

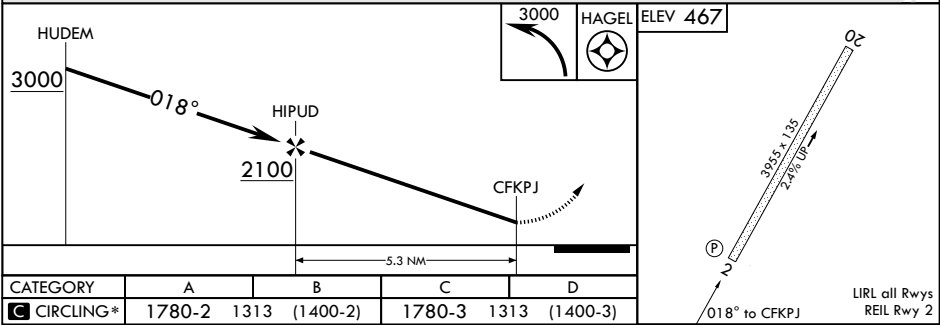
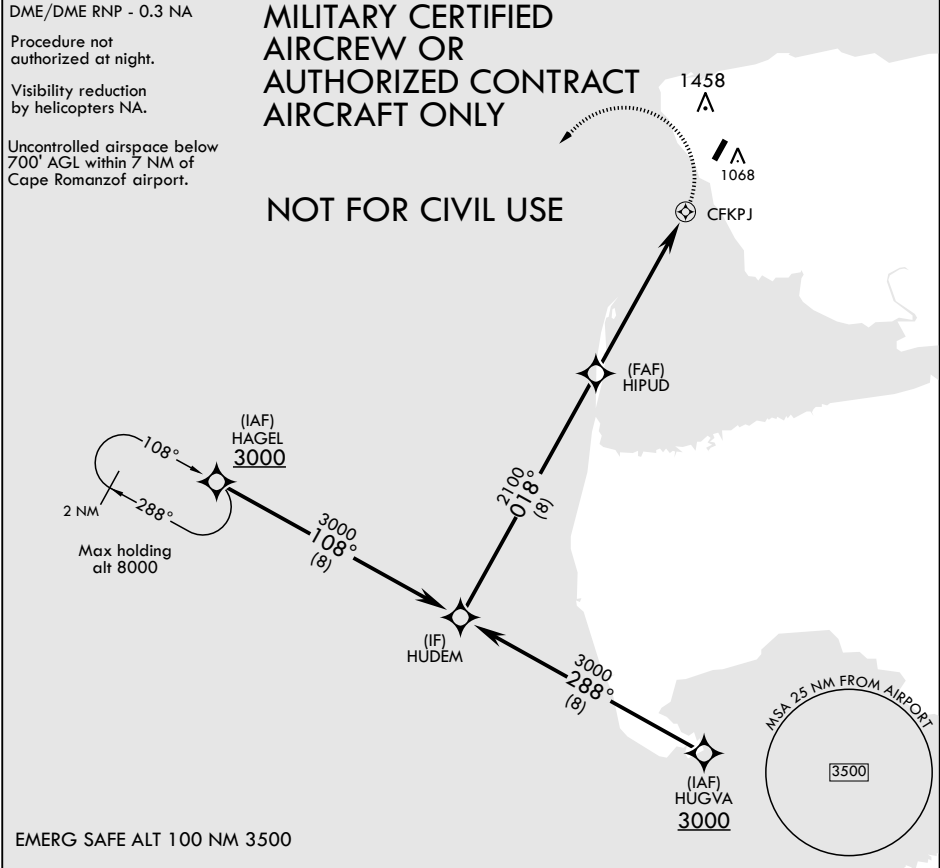
▼ * Circling NA East of Rwy 2-20.	MISSED APPROACH: Climbing left turn to 3000 direct HAGEL and hold.
--	--

ANCHORAGE CENTER 124.5 226.8	CTAF 126.2	KENAI RADIO 122.1
---------------------------------	---------------	----------------------

DME/DME RNP - 0.3 NA
Procedure not authorized at night.
Visibility reduction by helicopters NA.
Uncontrolled airspace below 700' AGL within 7 NM of Cape Romanzof airport.

MILITARY CERTIFIED
AIRCREW OR
AUTHORIZED CONTRACT
AIRCRAFT ONLY

NOT FOR CIVIL USE



CATEGORY	A	B	C	D
C CIRCLING*	1780-2 1313 (1400-2)	1780-3 1313 (1400-3)		