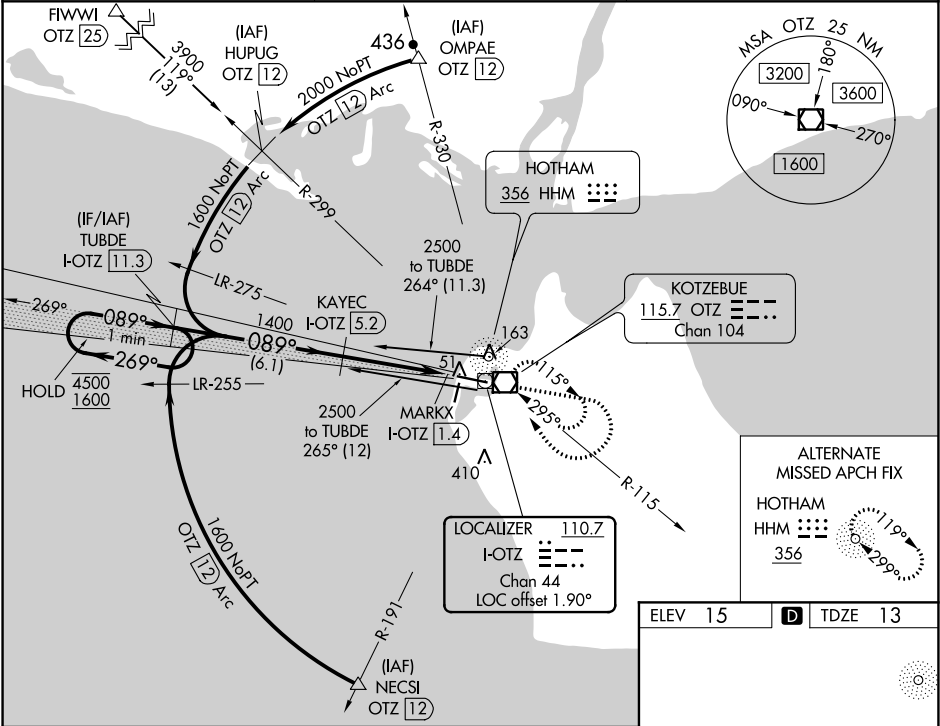


LOC/DME I-OTZ	APP CRS	Rwy Idg	5900
110.7	089°	TDZE	13
Chan 44		Apt Elev	15

ILS or LOC RWY 9
RALPH WIEN MEMORIAL (OTZ) (PAOT)

DME required.	MISSED APPROACH: Climb to 1700 then climbing right turn to 2000 direct OTZ VOR/DME and hold, continue climb-in-hold to 2000.
<p>⚠ Circling Rwy 18, 36 NA at night, Circling Rwy 27 at night, operational VGSi required, remain on or above VGSi glidepath until threshold. Rwy 9 helicopter visibility reduction below RVR 4000 NA.</p> <p>❄ -44°C</p>	

AFIS 135.45	ANCHORAGE CENTER 119.2 263.0	KOTZEBUE RADIO 123.6 (CTAF)
----------------	---------------------------------	--------------------------------



VGSi and ILS glidepath not coincident (VGSi Angle 3.00/TCH 43).		1700	2000	OTZ
One Minute Holding Pattern		TUBDE I-OTZ 11.3	KAYEC I-OTZ 5.2	
4500 ← 269° 089° → 1600		1400	MARKX I-OTZ 1.4	
GS 3.00° TCH 38		Use I-OTZ DME when on the localizer course.		
		6.1 NM	3.4 NM	0.4 0.4
CATEGORY	A	B	C	D
S-ILS 9	263/50		250 (300-1)	
S-LOC 9	320/55	307 (400-1)	320/50	307 (400-1)
CIRCLING	520-1	505 (600-1)	720-2 705 (800-2)	720-2¼ 705 (800-2¼)

AK, 05 NOV 2020 to 31 DEC 2020

AK, 05 NOV 2020 to 31 DEC 2020