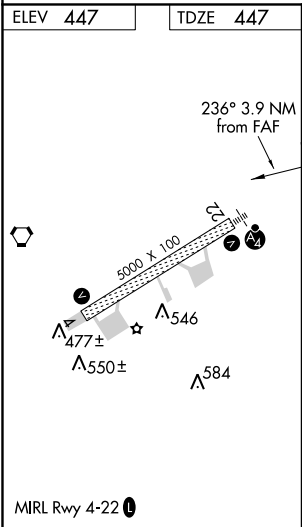
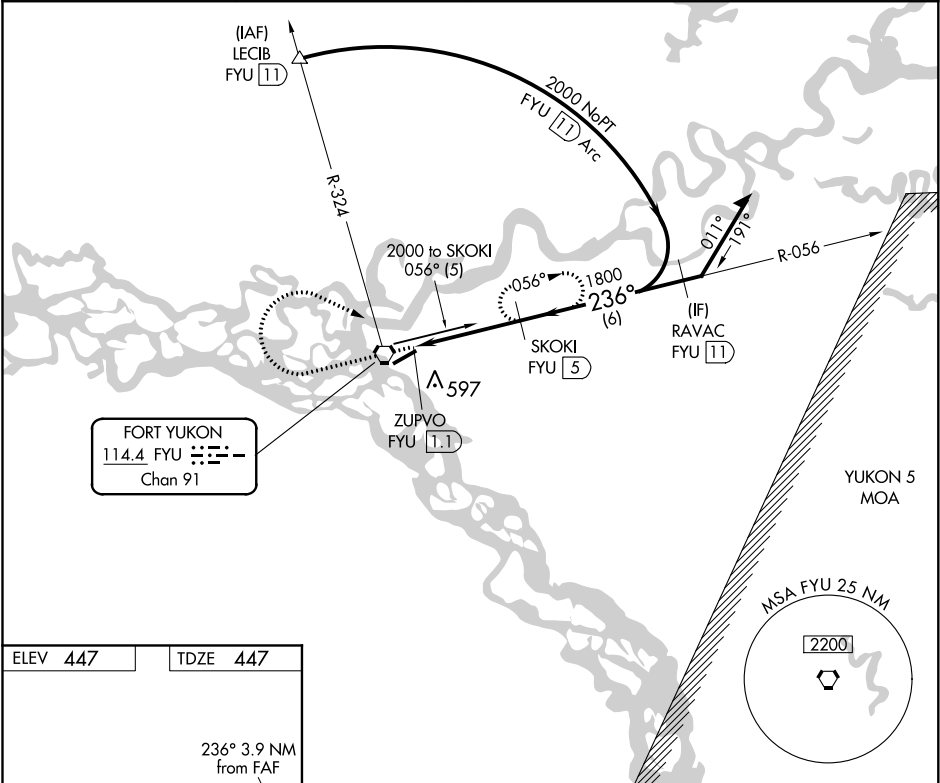




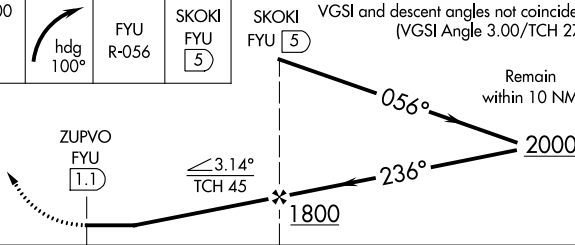

VORTAC FYU	APP CRS	Rwy Idg	5000
114.4	236°	TDZE	447
Chan 91		Apt Elev	447

VOR/DME or TACAN RWY 22  
FORT YUKON (FYU) (PFYU)

-45°C	Inop table does not apply. Circling NA southeast of Rwy 4-22. Rwy 22 Straight-In and Circling minimums NA at night. Helicopter visibility reduction below 1 SM NA.	MISLSF	MISSED APPROACH: Climb to 2000 then right turn on heading 100° and FYU VORTAC R-056 to SKOKI/5 DME and hold.
-------	--	--------	--

AWOS-3P 125.8	ANCHORAGE CENTER 135.0 225.4	FAIRBANKS RADIO 122.05	CTAF 122.5 0
------------------	---------------------------------	---------------------------	-----------------



2000		 hdg 100°	FYU R-056	SKOKI FYU 5	SKOKI FYU 5	VGSI and descent angles not coincident (VGSI Angle 3.00/TCH 27).
						
CATEGORY	A		B		C	D
S-22	960-1 513 (600-1)				960-1 <sup>3</sup> / <sub>8</sub> 513 (600-1 <sup>3</sup> / <sub>8</sub> )	
 CIRCLING	960-1 513 (600-1)				960-1 <sup>1</sup> / <sub>2</sub> 513 (600-1 <sup>1</sup> / <sub>2</sub> )	1000-2 553 (600-2)