

FAIRBANKS, ALASKA

RNAV (GPS) RWY 32

APCH CRS	Rwy Idg	14,530
320°	TDZE	548
	Arpt Elev	548

AL-1729 (USAF)

EIELSON AFB (PAEI)

T * When ALS inop, increase CAT AB RVR to 55 and vis to 1 mile, CAT CDE RVR to 60 and vis to 1 1/8 miles.
** Circling not authorized E Rwy 14-32.

ALSF-1

MISSED APPROACH: Climb to 1000, then climbing right turn to 6000 direct FALCO and hold, continue climb-in-hold to 6000.

ATIS★
119.9 273.5

FAIRBANKS APP CON
125.35 363.2 180°-359°
127.1 251.1 360°-179°

TOWER★
127.2 352.05

GND CON
121.8 275.8

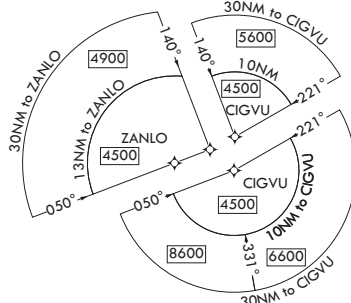
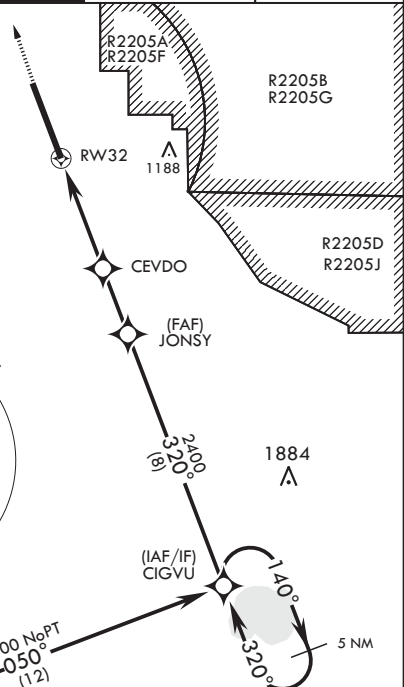
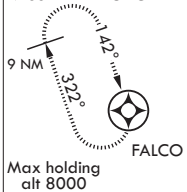
CLNC DEL
343.7

DME/DME RNP - 0.3 NA

CAUTION: CAT DE circling airspace not completely contained within controlled airspace. Uncontrolled airspace below 700' AGL outside EIL Class D.

CAUTION: Approach not authorized from ZANLO when R-2211 active.

MISSED APPROACH

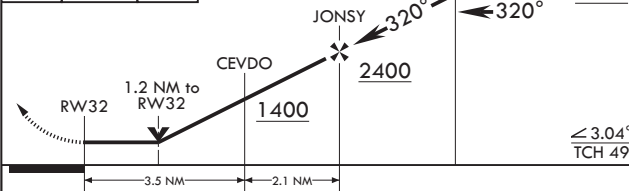


ATC RADAR REQUIRED

EMERG SAFE ALT 100 NM 16.000



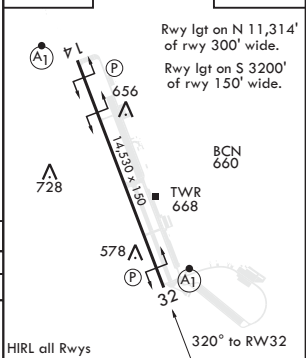
VGSI and descent angles
not coincident (VGSI
angle 2.70/TCH 44).



CATEGORY	A	B	C	D	E
LNAV MDA*	940/24 392 (400-1/2)		940/35	392	(400-3/8)
C CIRCLING**	1000-1 452 (500-1)	1060-1 512 (600-1)	1100-1 1/2 552 (600-1 1/2)	1260-2 1/4 712 (800-2 1/4)	1260-2 1/2 712 (800-2 1/2)

ELEV 548

TDZE 548



FAIRBANKS, ALASKA

64°40'N - 147°06'W

EIELSON AFB (PAEI)

RNAV (GPS) RWY 32

Amdt 4 08NOV18
TERPS