

FAIRBANKS, ALASKA

RNAV (GPS) RWY 14

APCH CRS	Rwy Idg	14,530
140°	TDZE	537
	Arpt Elev	548

AL-1729 (USAF)

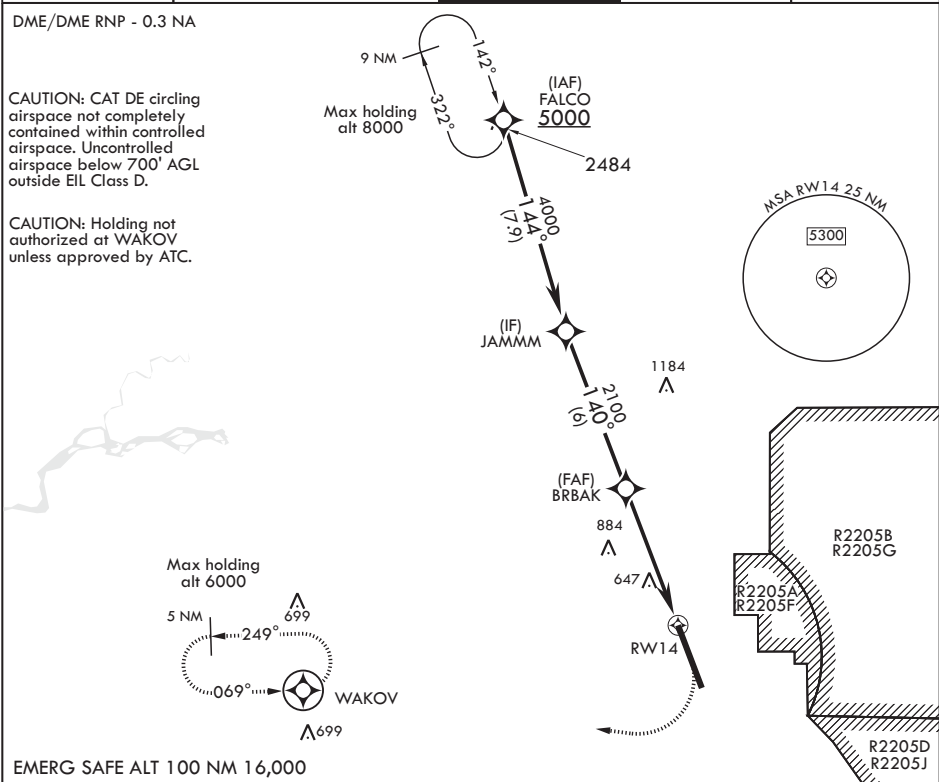
EIELSON AFB (PAEI)

V * When ALS inop, increase RVR to 55 and vis to 1 mile.
** Circling not authorized E Rwy 14-32.

ALSF-1

MISSED APPROACH: Climb to 1000 then climbing right turn to 4000 direct WAKOV and hold, continue climb-in-hold to 4000.

ATIS★ 119.9 273.5	FAIRBANKS APP CON 125.35 363.2 180°-359° 127.1 251.1 360°-179°	TOWER★ 127.2 352.05	GND CON 121.8 275.8	CLNC DEL 343.7
----------------------	--	------------------------	------------------------	-------------------



EMERG SAFE ALT 100 NM 16,000

FALCO	5000	144°	JAMMM	4000	140°	BRBAK	2100	1.1 NM to RW14	RW14	5.2 NM
<p>WAKOV ELEV 548 TDZE 537</p> <p>Rwy lgt on N 11,314' of rwy 300' wide. Rwy lgt on S 3200' of rwy 150' wide.</p> <p>BCN 660 TWR 668</p> <p>HIRL all Rwys</p>										

CATEGORY	A	B	C	D	E
LNAV MDA*	900/24 363 (400-½)	900/35 363 (400-¾)	1100-1½ 552 (600-1½)	1260-2¼ 712 (800-2¼)	1260-2½ 712 (800-2½)
CIRCLING**	1000-1 452 (500-1)	1060-1 512 (600-1)	1100-1½ 552 (600-1½)	1260-2¼ 712 (800-2¼)	1260-2½ 712 (800-2½)

FAIRBANKS, ALASKA

64°40'N - 147°06'W

EIELSON AFB (PAEI)

Amdt 5 08NOV18
TERPS

RNAV (GPS) RWY 14

AK, 03 DEC 2020 to 31 DEC 2020

AK, 03 DEC 2020 to 31 DEC 2020