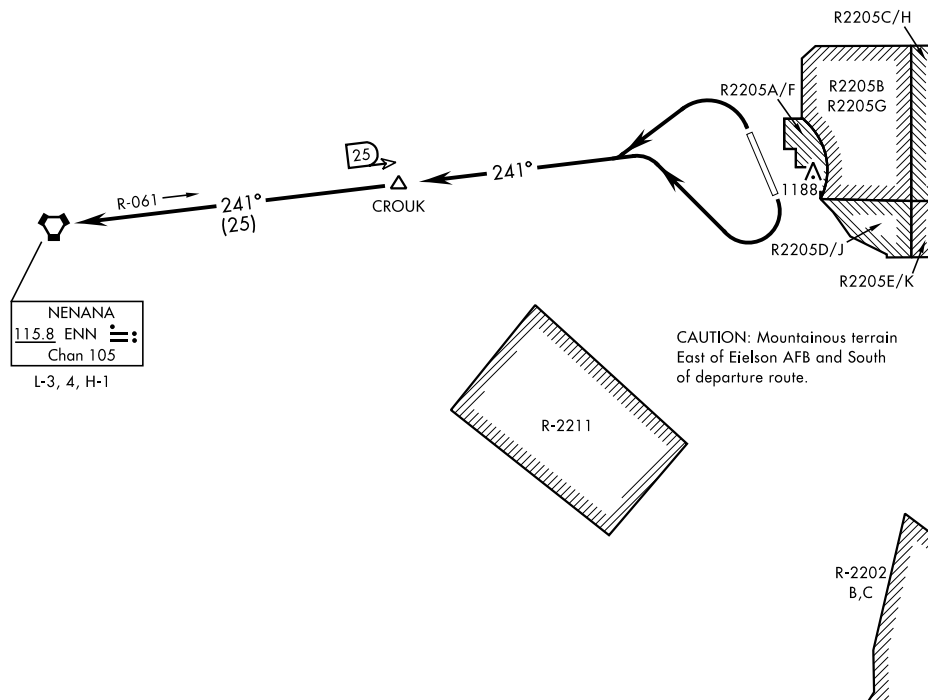


ATIS ★ 119.9 273.5
 CLNC DEL
 343.7
 EIELSON GND CON
 121.8 275.8
 EIELSON TOWER ★
 127.2 352.05
 FAIRBANKS DEP CON
 127.1 338.275



DEPARTURE ROUTE DESCRIPTION

TAKE-OFF RWY 14: Turn right to intercept ENN VORTAC R-061 and climb to assigned altitude, thence . . .

TAKE-OFF RWY 32: Turn left to intercept ENN VORTAC R-061 and climb to assigned altitude, thence . . .

Proceed to NENANA via R-061 then via assigned route.