

WAAS
CH **81815**
W07A

APP CRS
074°

Rwy Idg **12400**
TDZE **132**
Apt Elev **151**

RNAV (GPS) Y RWY 7R

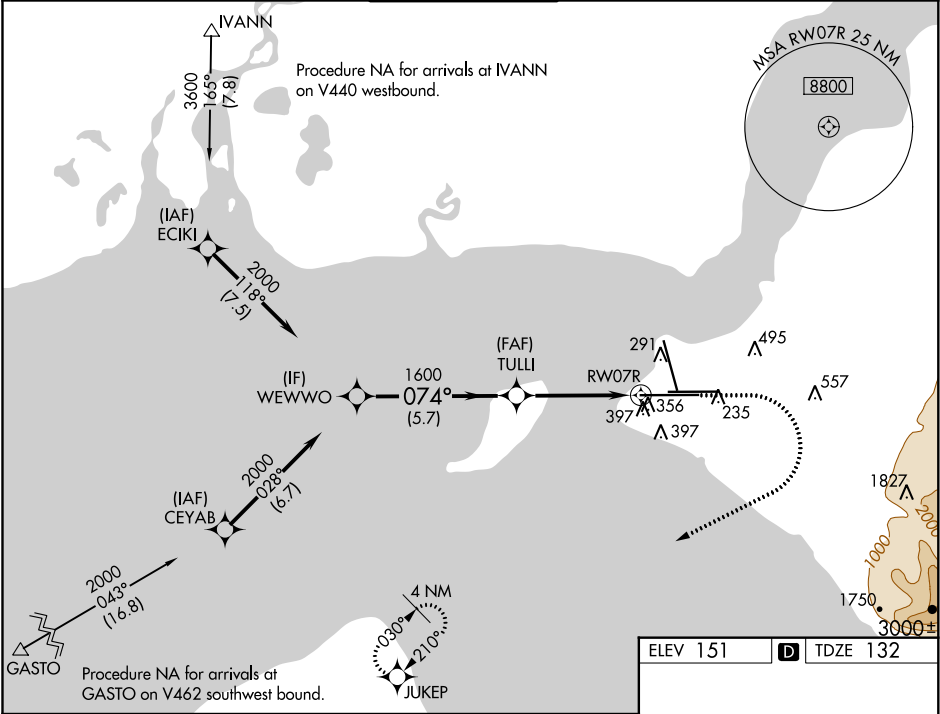
TED STEVENS ANCHORAGE INTL (ANC) (PANC)

RNP APCH.
For uncompensated Baro-VNAV systems, LNAV/VNAV NA below -18°C or above 54°C. For inop ALS, increase LNAV/VNAV all Cats and LNAV Cat C/D visibility to 1¾ SM.
⚠

ALSF-2

MISSED APPROACH: Climb to 900 then climbing right turn to 3000 direct JUKEP and hold.

D-ATIS 135.5	ANCHORAGE APP CON 118.6 290.5	ANCHORAGE TOWER 118.3 257.8	GND CON 121.9 338.25	CLNC DEL 119.4 323.1
------------------------	---	---------------------------------------	--------------------------------	--------------------------------



WEWWO
2000
GP 3.00°
TCH 55

VGSI and RNAV glidepath not coincident (VGSI Angle 3.00/TCH 72).

TULLI
1600

RW07R
1.3 NM to RW07R

JUKEP
900
3000

*LNAV only

5.7 NM
3.1 NM
1.3 NM

CATEGORY	A	B	C	D
LPV DA	332/18		200 (200-½)	
LNAV/VNAV DA	648/55		516 (500-1)	
LNAV MDA	620/24 488 (500-½)		620/50 488 (500-1)	
CIRCLING	700-1 549 (600-1)		800-1¾ 649 (700-1¾) 920-2½ 769 (800-2½)	

ELEV 151
D TDZE 132

074° to RW07R

REIL Rwy 33
TDZ/CL Rwy 7L and 7R
HIRL all Rwy