

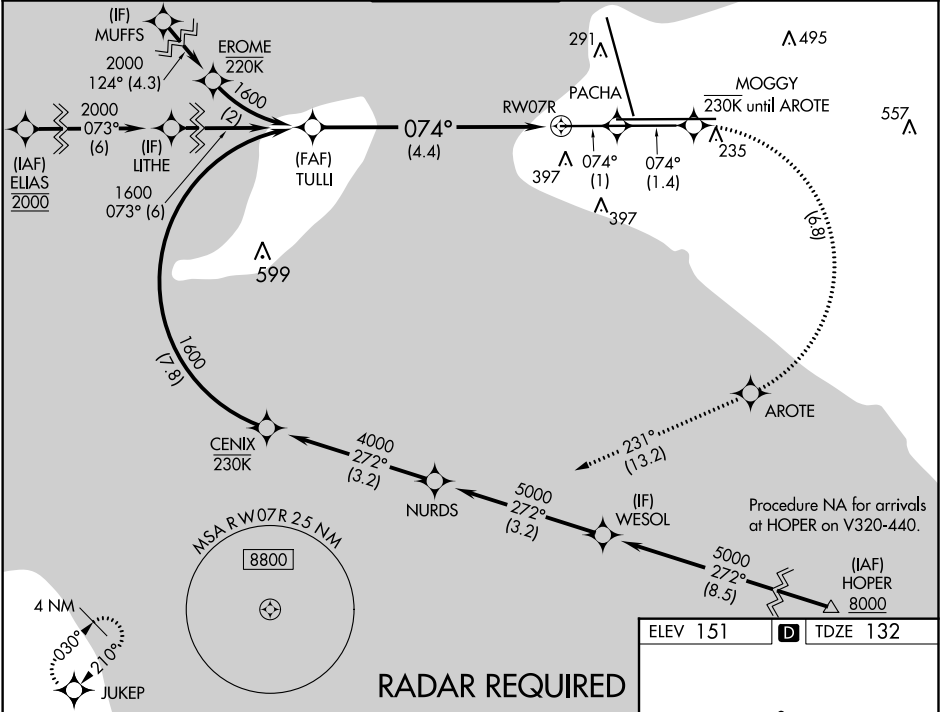
RNP AR APCH, RF required.

Missed approach requires RNP less than 1.0.
For uncompensated Baro-VNAV systems, procedure
NA below -18°C (0°F) or above 54°C (130°F).
For inop ALS, increase RNP 0.30 all Cats visibility to 1½ SM.

ALSF-2

MISSED APPROACH: Climb to 3000
on the missed approach route to
JUKEP and hold.

D-ATIS	ANCHORAGE APP CON	ANCHORAGE TOWER	GND CON	CLNC DEL
135.5	118.6 290.5	118.3 257.8	121.9 338.25	119.4 323.1



3000
tr 074°

PACHA

tr 074°

MOGGY

AROTÉ

tr 231°

JUKEP

TULLI

1600

1600

074°

RWY 07R

4.4 NM

GP 3.00°
TCH 55

See planview for multiple IF locations.

VGSI and RNAV glidepath not coincident
(VGSI Angle 3.00/TCH 72).

CATEGORY	A	B	C	D
RNP 0.30 DA	562/50 430 (500-1)			

AUTHORIZATION REQUIRED

