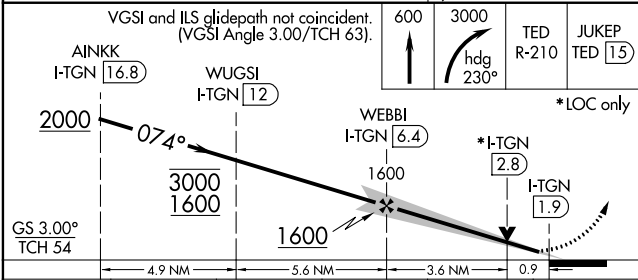
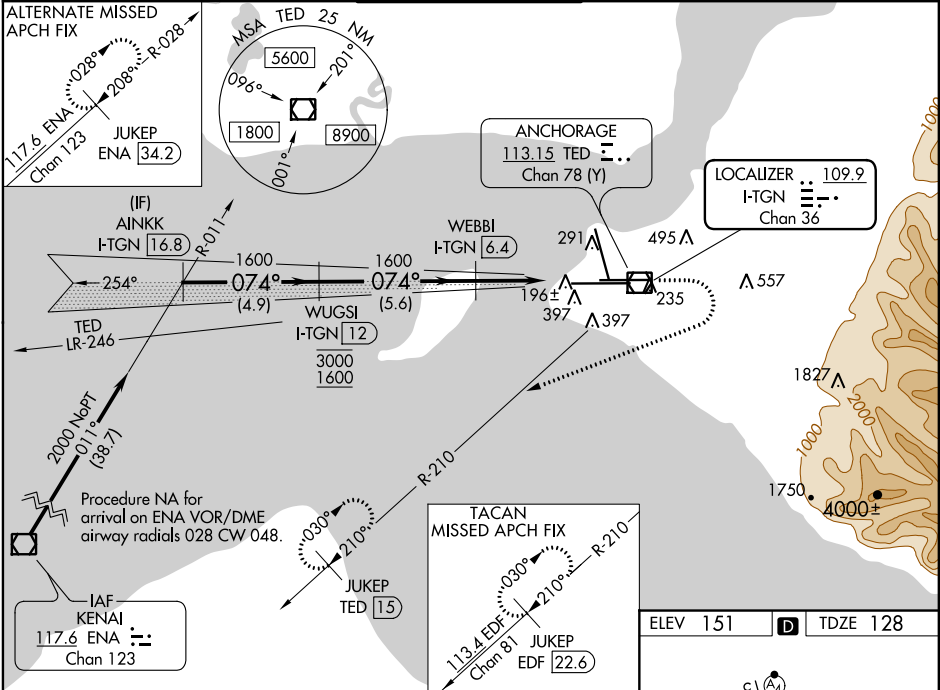


LOC/DME I-TGN	APP CRS	Rwy Idg
109.9	074°	10600
Chan 36		TDZE 128
		Apt Elev 151

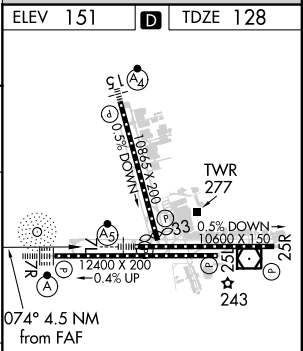
ILS or LOC RWY 7L
TED STEVENS ANCHORAGE INTL (ANC)(PANC)

DME Required	MALSR	MISSED APPROACH: Climb to 600 then climbing right turn to 3000 on heading 230° and TED VOR/DME R-210 to JUKEP/TED 15 DME and hold. (TACAN aircraft climb to 600 then climbing right turn to 3000 on heading 230° on EDF TACAN R-210 to JUKEP/EDF 22.6 DME and hold).
For inop ALS, increase S-ILS 7L Cat E visibility to RVR 4000, S-LOC 7L Cats C, D and E visibility to RVR 5500.		

D-ATIS	ANCHORAGE APP CON	ANCHORAGE TOWER	GND CON	CLNC DEL
135.5	118.6 290.5	118.3 257.8	121.9 338.25	119.4 323.1



CATEGORY	A	B	C	D	E
S-ILS 7L	328/18 200 (200-1/2)				
S-LOC 7L	500/24	372 (400-1/2)	500/35	372 (400-3/4)	
CIRCLING	700-1	549 (600-1)	800-1 3/4 649 (700-1 3/4)	920-2 1/2 769 (800-2 1/2)	920-2 3/4 769 (800-2 3/4)



AK, 05 NOV 2020 to 31 DEC 2020

AK, 05 NOV 2020 to 31 DEC 2020