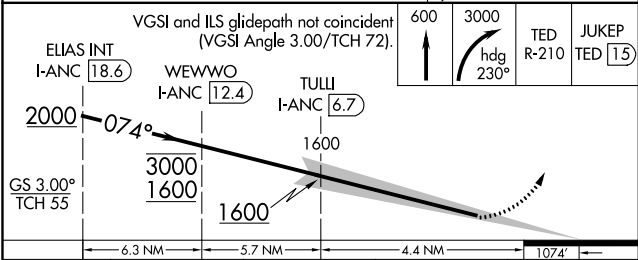
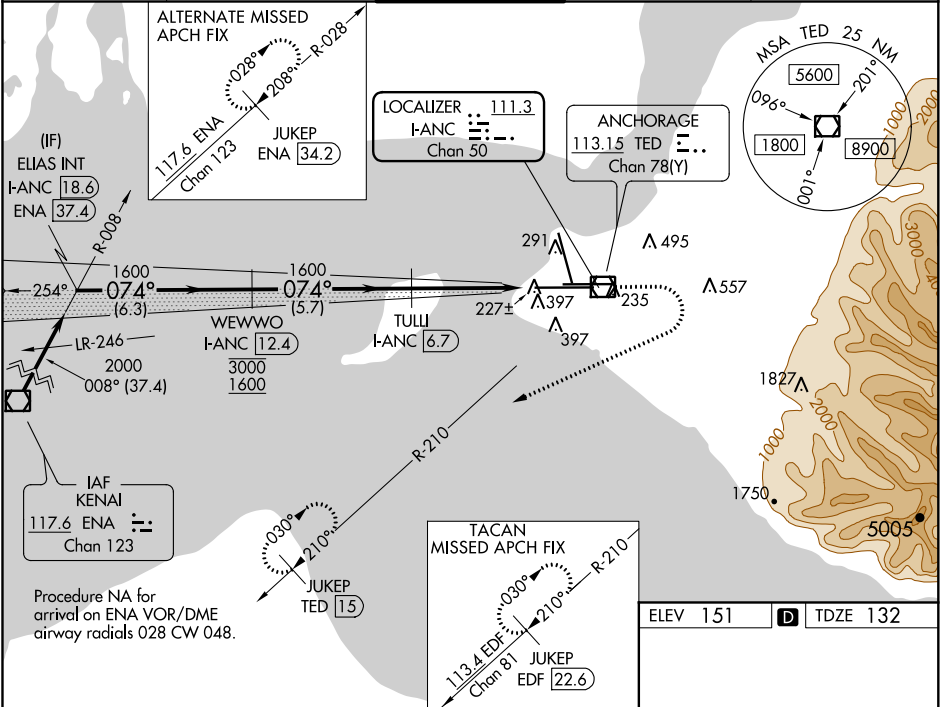


| | | |
|----------------|-------------|---------------------|
| LOC/DME I-ANC | APP CRS | Rwy Idg |
| 111.3 | 074° | 12400 |
| Chan 50 | | TDZE 132 |
| | | Apt Elev 151 |

ILS RWY 7R (CAT II & III)
TED STEVENS ANCHORAGE INTL (ANC) (PANC)

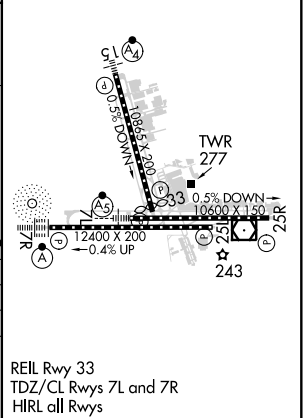
| | | |
|---|--------|---|
| DME required. | ALSF-2 | MISSED APPROACH: Climb to 600 then climbing right turn to 3000 on heading 230° TED VOR/DME R-210 to JUKEP/TED 15 DME and hold. (TACAN aircraft climb to 600 then climbing right turn to 3000 on heading 230° and EDF TACAN R-210 to JUKEP/EDF 22.6 DME and hold). |
| ▼ Rwy 7L threshold 6140 feet east of Rwy 7R threshold. ▲ CAT II: RVR 1000 authorized with specific OPSPEC, MSPEC, or LOA approval and use of autoland or HUD to touchdown. | | |

| | | | | |
|--------------|--------------------|--------------------|---------------------|--------------------|
| D-ATIS | ANCHORAGE APP CON | ANCHORAGE TOWER | GND CON | CINC DEL |
| 135.5 | 118.6 290.5 | 118.3 257.8 | 121.9 338.25 | 119.4 323.1 |



| | | | | |
|----------|-----------------------------|---|---|---|
| CATEGORY | A | B | C | D |
| S-ILS 7R | CAT II RA 115/12 100 DA 232 | | | |
| S-ILS 7R | CAT III RVR 06 | | | |

CATEGORY II & III ILS - SPECIAL AIRCREW
& AIRCRAFT CERTIFICATION REQUIRED



AK, 05 NOV 2020 to 31 DEC 2020

AK, 05 NOV 2020 to 31 DEC 2020