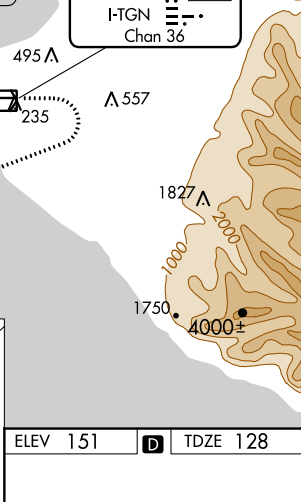


ILS RWY 7L (SA CAT I & II)  
TED STEVENS ANCHORAGE INTL (ANC)(PANC)

**MISSED APPROACH:** Climb to 600 then climbing right turn to 3000 on heading 230° and TED VOR/DME R-210 to JUKEP/TED 15 DME and hold. (TACAN aircraft climb to 600 then climbing right turn to 3000 on heading 230° on EDF TACAN R-210 to JUKEP/EDF 22.6 DME and hold).

LOCALIZER 109.9  
I-TGN  
Chan 36



CATEGORY	A	B	C	D
S-ILS 7L	SA CAT I	RA 158/14	150	DA 278
S-ILS 7L	SA CAT II	RA 108/12	100	DA 228

REIL Rwy 33  
TDZ/CL Rwy 7L and 7R  
HIRL all Rwy