

LOC/DME I-UNK	APP CRS	Rwy Idg	5900
111.3	150°	TDZE	27
Chan 50		Apt Elev	27

LOC RWY 15

UNALAKLEET (UNK)(PAUN)

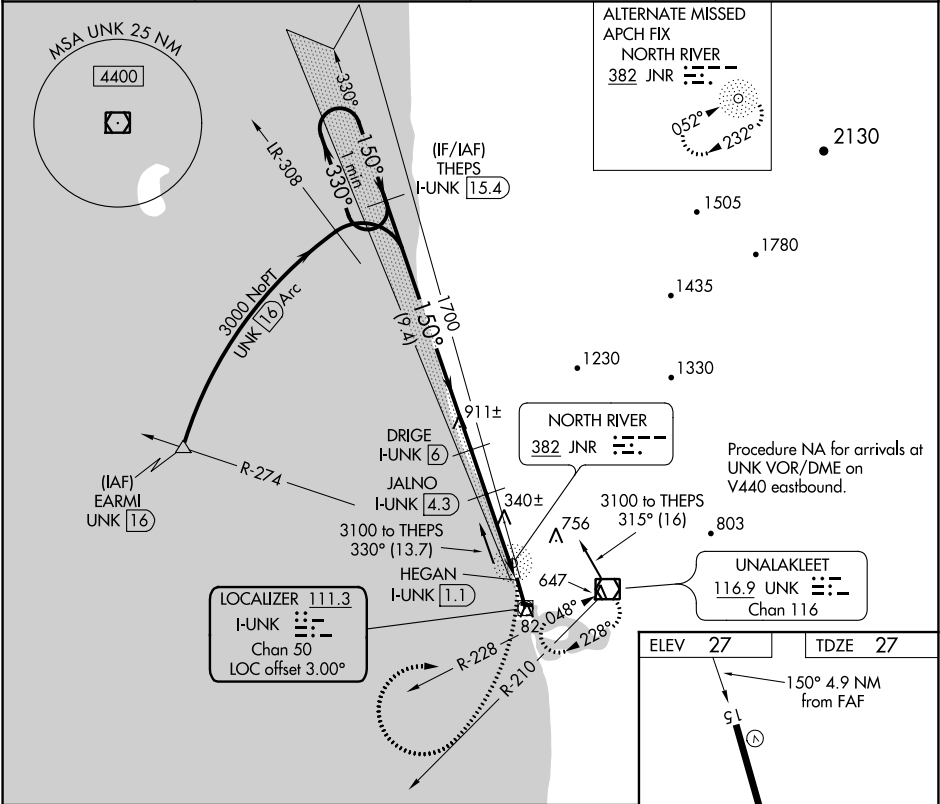
DME required.

Circling NA east of Rwy 15-33. Circling Rwy 9 NA at night. Rwy 15 helicopter visibility reduction below ¾ SM NA.

-39°C

MISSED APPROACH: Climbing right turn to 3000 on UNK VOR/DME R-210 then right turn direct UNK VOR/DME and hold.

AWOS-3P	ANCHORAGE CENTER	NOME RADIO	CTAF
132.25	135.7 335.5	122.3	123.0



One Minute Holding Pattern		THEPS I-UNK 15.4		3000 UNK R-210		UNK	
3000		330° 150°		150°		150°	
Use I-UNK DME when on the localizer course.		1700		3.13° TCH 39		JALNO I-UNK 4.3	
		1140		I-UNK 2.8		HEGAN I-UNK 1.1	
		9.4 NM		1.7 NM		1.5 NM 1.7 NM	
CATEGORY	A	B	C	D			
S-15	600-1 573 (600-1)		600-1½ 573 (600-1½)				
CIRCLING	600-1 573 (600-1)	700-1 673 (700-1)	700-2 673 (700-2)	860-2¾ 833 (900-2¾)			

