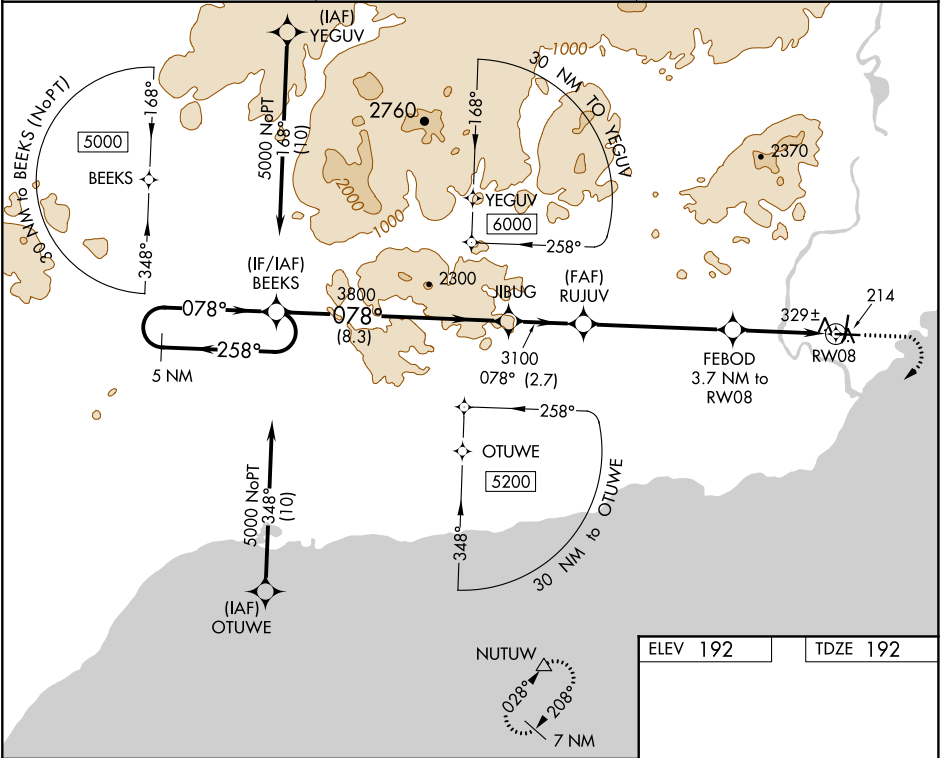


APP CRS	Rwy Idg	5086
078°	TDZE	192
	Apt Elev	192

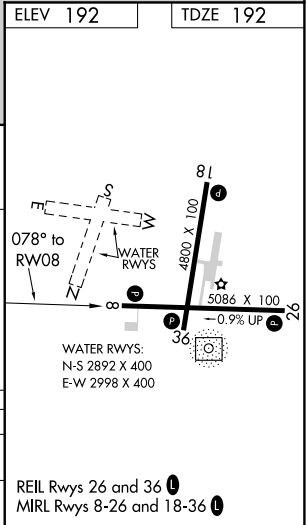
RNAV (GPS) RWY 8
ILIAMNA (ILI) (PAIL)

<p>When local altimeter setting not received, procedure NA. Rwy 8 helicopter visibility reduction below ¾ SM NA. DME/DME RNP- 0.3 NA.</p>	<p>MISSED APPROACH: Climb to 600, then climbing right turn to 7000 direct NUTUW and hold, continue climb-in-hold 7000.</p>
---	--

AFIS 134.95	ANCHORAGE CENTER 118.8	ILIAMNA RADIO 123.6 (CTAF) 0
----------------	---------------------------	---------------------------------



5 NM Holding Pattern	BEEKS	JIBUG	RUJUV	FEBOD	NUTUW
5000	3800	3100	1400	600	7000
258°	078°	078°	078°	078°	078°
8.3 NM	2.7 NM	5.3 NM	2.6 NM	1.1 NM	
CATEGORY	A	B	C	D	
LNNAV MDA	580-1	388 (400-1)	580-1 ½	388 (400-1 ½)	
CIRCLING	740-1	548 (600-1)	800-1 ¾	1700-3	
			608 (700-1 ¾)	1508 (1600-3)	



AK, 05 NOV 2020 to 31 DEC 2020

AK, 05 NOV 2020 to 31 DEC 2020