

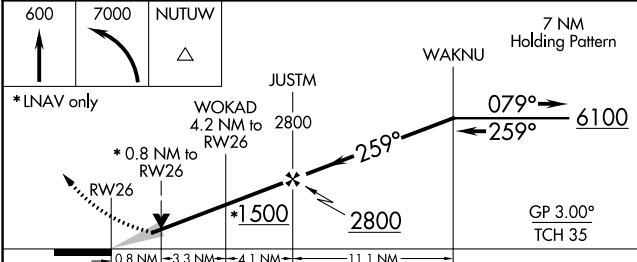
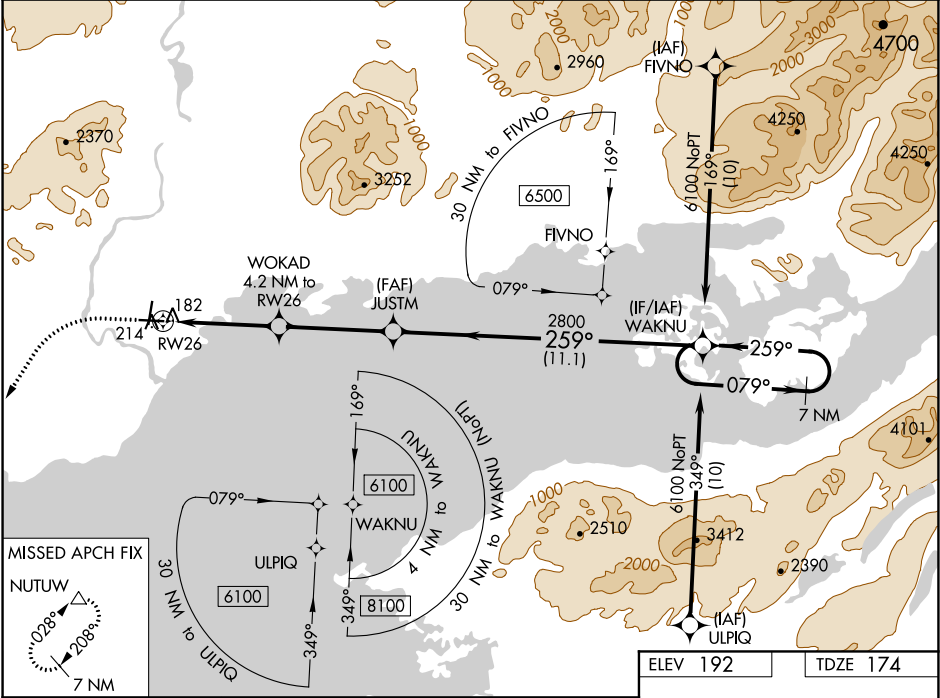
| | | |
|--|------------------------|---|
| WAAS CH 45910 W26A | APP CRS 259° | Rwy Idg TDZE 174 Apt Elev 192 |
|--|------------------------|---|

RNAV (GPS) RWY 26

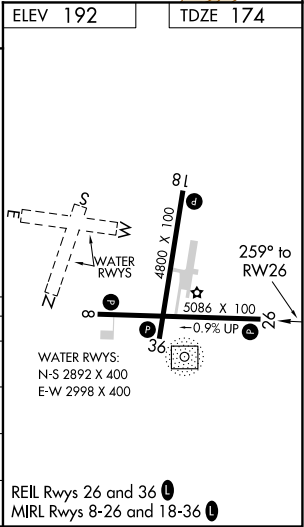
ILIAMNA (ILI) (PAIL)

| | |
|--|---|
| <div><div><div></div><div></div><div></div></div><div><div></div><div></div><div></div></div></div> <div>For uncompensated Baro-VNAV systems, LNAV/VNAV NA below -21°C (-5° F) or above 54°C (130°F). When local altimeter setting not received, procedure NA. DME/DME RNP-0.3 NA.</div> | MISSED APPROACH: Climb to 600, then climbing left turn to 7000 direct NUTUW and hold, continue climb-in-hold to 7000. |
|--|---|

| | | |
|-----------------------|----------------------------------|--|
| AFIS 134.95 | ANCHORAGE CENTER 118.8 | ILIAMNA RADIO 123.6 (CTAF) 0 |
|-----------------------|----------------------------------|--|



| CATEGORY | A | B | C | D |
|--------------|-------------------|--|----------------------|---|
| LPV DA | 424-1 | 250 (300-1) | | |
| LNAV/VNAV DA | 424-1 | 250 (300-1) | | |
| LNAV MDA | 440-1 | 266 (300-1) | | |
| CIRCLING | 740-1 548 (600-1) | 800-1 ³ / ₄ 608 (700-1 ³ / ₄) | 1700-3 1508 (1600-3) | |



AK, 05 NOV 2020 to 31 DEC 2020

AK, 05 NOV 2020 to 31 DEC 2020