

SHEMYA I., ALEUTIAN I., ALASKA

VOR/DME or TACAN RWY 10

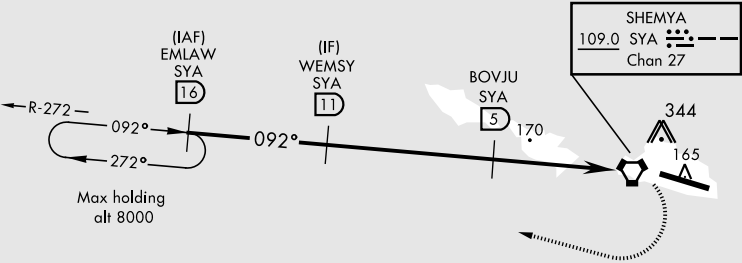
VORTAC SYA 109.0 Chan 27	APCH CRS 092°	Rwy Idg 10,004 TDZE 98 Arprt Elev 98
--	-------------------------	---

AL-1246 [USAF]

EARECKSON AS (PASY)

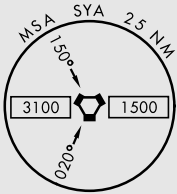
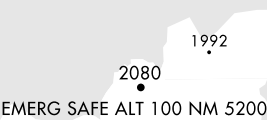
* When ALS inop, increase vis to 1½ miles. ** Circling Not Authorized in area N of Rwy 10-28.		ALS F-1 	MISSED APPROACH: Climb to 1200, then climbing right turn to 4000, intercept SYA R-272 direct EMLAW and hold.
ANCHORAGE CENTER 119.1 339.8	CTAF 127.2 0 352.05 0		ASOS 135.65

CAUTION: Numerous obstructions in area N of Rwy 10-28.
Missed approach requires use of RNAV or ATC RADAR monitoring.



AK, 03 DEC 2020 to 31 DEC 2020

AK, 03 DEC 2020 to 31 DEC 2020



<div><div><div>EMLAW 16 4000</div><div>WEMSY 11 2500</div><div>BOVJU 5 1800</div></div><div><div>092°</div><div>2.56° TCH 42</div></div></div> <div><div>1200</div><div>4000</div><div>EMLAW R-272 16</div></div> <div><div>ELEV 98</div><div>TDZE 98</div></div>					
<div><div>VORTAC</div><div>ELVEK 0.1</div><div>4.9 NM</div><div>1.2 NM</div></div>					
CATEGORY	A	B	C	D	E
S-10 *	460-1 362 (400-1)				
CIRCLING **	460-1½ 363 (400-1½)	560-1½ 463 (500-1½)	660-2 563 (600-2)		
<div><div><div><div>101</div><div>P</div><div>A1</div></div><div><div>☆</div><div>TWR</div></div><div><div>10,004 x 130</div><div>P</div><div>A2</div></div><div><div>092° from VORTAC</div><div>P</div></div><div>28</div></div></div> <div><div>HIRL Rwy 10-28 0</div><div>REIL Rwy 10-28 0</div></div>					

SHEMYA I., ALEUTIAN I., ALASKA

52°43'N-174°07'E

EARECKSON AS (PASY)

Amtd 5 10OCT19

VOR/DME or TACAN RWY 10