

WAAS CH <b>45612</b> <b>W15A</b>	APP CRS <b>146°</b>	Rwy Idg <b>10179</b> TDZE <b>75</b> Apt Elev <b>100</b>
--	------------------------	---

RNAV (GPS) RWY 15

COLD BAY (CDB) (PACD)

RNP APCH.

▼

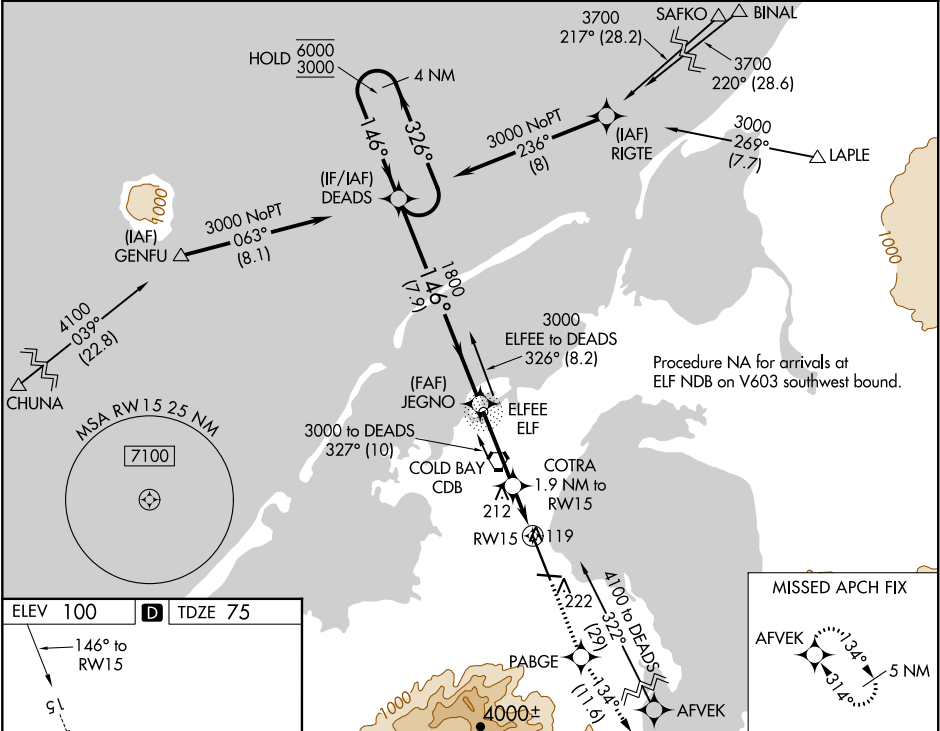
▲

For uncompensated Baro-VNAV systems, LNAV/VNAV NA below -10°C or above 54°C. Circling NA for Cat A southwest of Rwy 15-33 at night. Circling NA for Cats B/C/D southwest of Rwy 15-33. For inop ALS, increase LNAV/VNAV all Cats visibility to RVR 4000 and LNAV Cat C/D visibility to RVR 6000. #RVR 1800 authorized with use of FD or AP or HUD to DA.

MALSR

MISSED APPROACH: Climb to 4100 direct PABGE and on track 134° to AFVEK and hold, continue climb-in-hold to 4100.

ASOS <b>135.75</b>	ANCHORAGE CENTER <b>118.5 278.3</b>	COLD BAY RADIO <b>123.6 (CTAF) 0</b>
-----------------------	--	---



ELEV 100    **D**    TDZE 75

HIRL all Rwy's

4 NM Holding Pattern		DEADS	JEGNO	4100 ↑	PABGE ✦	tr 134°	AFVEK ✦
6000 ← 326° 3000 → 146°		1800		*LNAV only			
GP 3.10° TCH 55		1800		COTRA 1.9 NM to RW15 *760			
		7.9 NM		3.2 NM	0.8 NM	1.1 NM	RW15
CATEGORY	A	B	C	D			
LPV DA#	275/24 200 (200-½)						
LNNAV/VNAV DA	325/24 250 (300-½)						
LNNAV MDA	480/24 405 (400-½)		480/40 405 (400-¾)				
CIRCLING	540-1		560-1½		860-2½		
	440 (500-1)		460 (500-1)		760 (800-2½)		