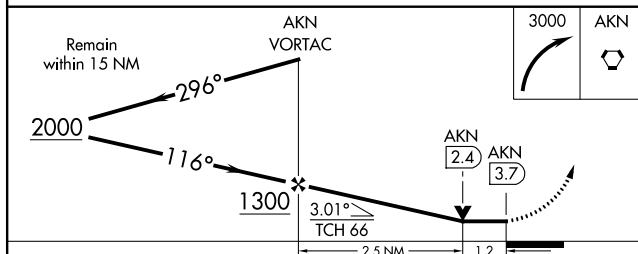
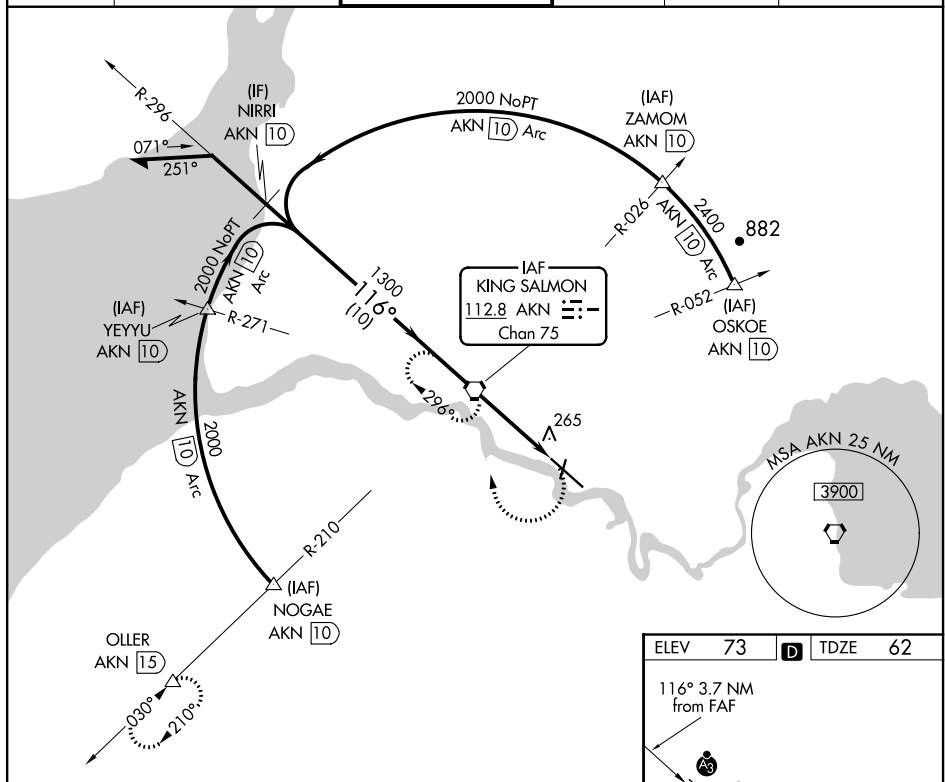


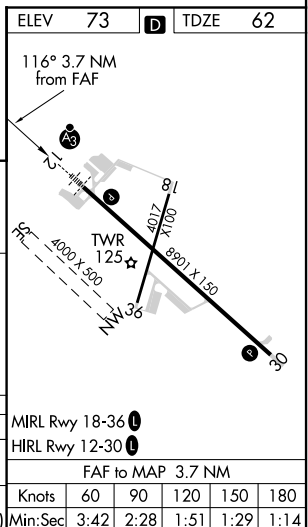
VOR or TACAN RWY 12
KING SALMON (AKN)(PAKN)

SSALR	MISSED APPROACH: Climbing right turn to 3000 direct AKN VORTAC and hold, continue climb-in-hold to 3000. (TACAN AIRCRAFT: Climbing right turn to 3000 via heading 238° and AKN VORTAC R-210 to OLLER 15 DME and hold SW, right turn, 030° inbound.)
-------	---

ATIS 128.8	ANCHORAGE CENTER 124.8 354.0	KING SALMON TOWER★ 118.3 279.5	GND CON 121.9	UNICOM 122.95	CTAF 121.90 352.05
---------------	---------------------------------	-----------------------------------	------------------	------------------	-----------------------



CATEGORY	A	B	C	D	E
S-12	520-½	458 (500-½)	520-¾ 458 (500-¾)	520-1	458 (500-1)
CIRCLING	580-1	507 (600-1)	580-1½ 507 (600-1½)	640-2 567 (600-2)	720-2¼ 647 (700-2¼)



AK. 05 NOV 2020 to 31 DEC 2020