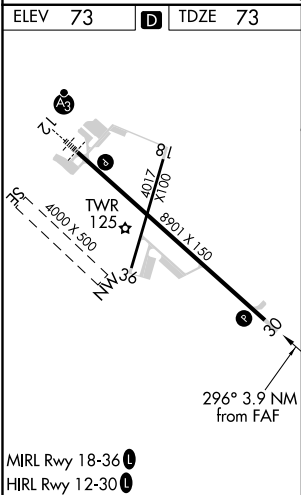
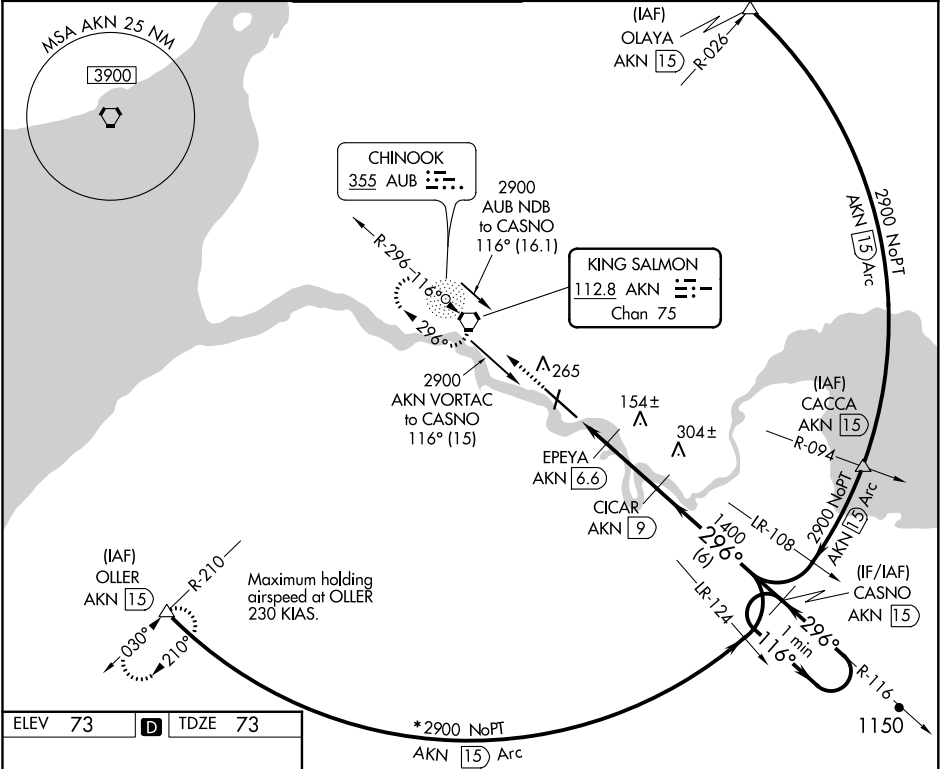


VORTAC AKN <b>112.8</b> Chan <b>75</b>	APP CRS <b>296°</b>	Rwy Idg TDZE <b>73</b> Apt Elev <b>73</b>
--	------------------------	---

VOR/DME or TACAN RWY 30  
KING SALMON (AKN)(PAKN)

<div><div><div>T</div><div>A</div><div>✱</div></div><div>-31°C</div></div> <div>Visibility reduction by helicopters NA.</div>		MISSED APPROACH: Climb to 3000 direct AKN VORTAC and hold, continue climb-in-hold to 3000. (TACAN AIRCRAFT: Climb to 500, then climbing left turn to 3000 via heading 222° and AKN VORTAC R-210 to OLLER/AKN 15 DME and hold SW, right turn, 030° inbound).			
ATIS 128.8	ANCHORAGE CENTER 124.8 354.0	KING SALMON TOWER ★ 118.3 279.5	GND CON 121.9	UNICOM 122.95	CTAF 121.9 0 352.05



3000 ↑ AKN		CASNO AKN 15		One Minute Holding Pattern	
EPEYA AKN 6.6		CICAR AKN 9		116° → 2900 ← 296°	
AKN 5.1		3.13° TCH 45		296°	
580		1400			
1.5 NM		2.4 NM		6 NM	
CATEGORY	A	B	C	D	E
S-30	420-1 347 (400-1)			420-1¼	347 (400-1¼)
CIRCLING	580-1	507 (600-1)	580-1½ 507 (600-1½)	640-2 567 (600-2)	720-2¼ 647 (700-2¼)