

WAAS CH <b>72608</b> <b>W12A</b>	APP CRS <b>116°</b>	Rwy Idg <b>8501</b> TDZE <b>62</b> Apt Elev <b>73</b>
--	------------------------	---

RNAV (GPS) RWY 12

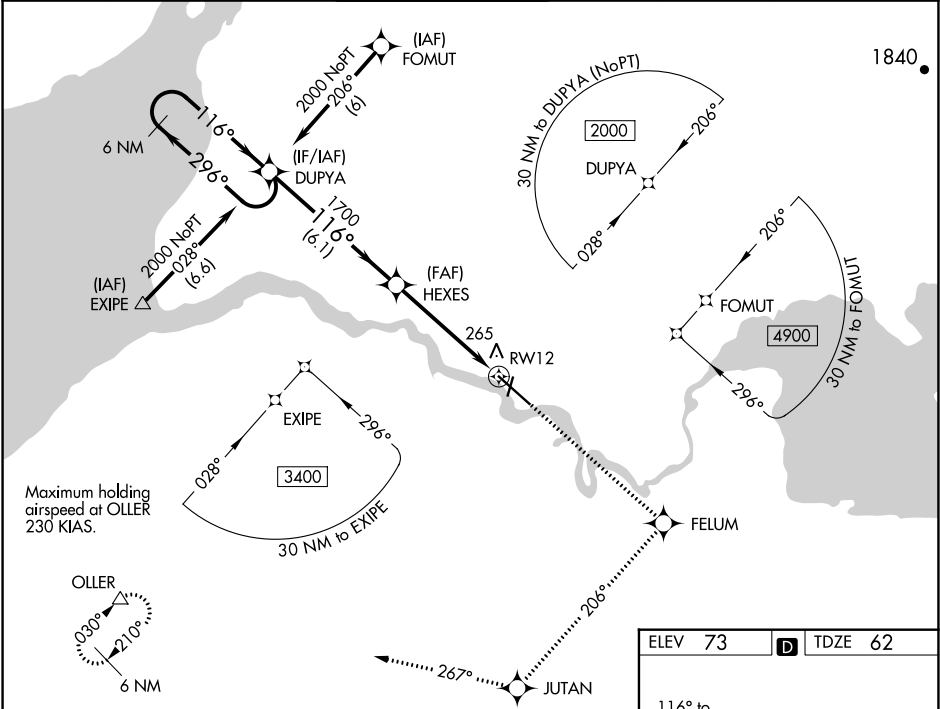
KING SALMON (AKN)(PAKN)

For uncompensated Baro-VNAV systems, LNAV/VNAV NA below -25°C (-13°F) or above 48°C (118°F). DME/DME RNP -0.3 NA. For inoperative ALSF increase LPV Cat E visibility to ¾ mile, LNAV/VNAV Cat E visibility to 1¼ mile, LNAV Cat E visibility to 1½ mile.

SSALR

MISSED APPROACH: Climb to 3000 direct FELUM and via 206° track to JUTAN and via 267° track to OLLER and hold.

ATIS <b>128.8</b>	ANCHORAGE CENTER <b>124.8 354.0</b>	KING SALMON TOWER* <b>118.3 279.5</b>	GND CON <b>121.9</b>	UNICOM <b>122.95</b>	CTAF <b>121.9 352.05</b>
----------------------	--	--	-------------------------	-------------------------	-----------------------------



VGSI and RNAV glidepath not coincident (VGSI Angle 3.00/TCH 66).				
6 NM Holding Pattern				
2000 ← 296° 116° → 1700				
GP 3.00° TCH 55				
6.1 NM 3.7 NM 1.2 NM				
CATEGORY	A	B	C	D
LPV DA	317-½ 255 (300-½)			
LNAV/VNAV DA	524-1 462 (500-1)			524-1¼ 462 (500-1¼)
LNAV MDA	520-½ 458 (500-½)	520-¾ 458 (500-¾)	520-1 458 (500-1)	
CIRCLING	580-1 507 (600-1)	580-1½ 507 (600-1½)	640-2 567 (600-2)	720-2¼ 647 (700-2¼)

