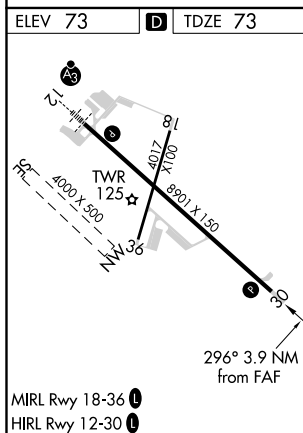
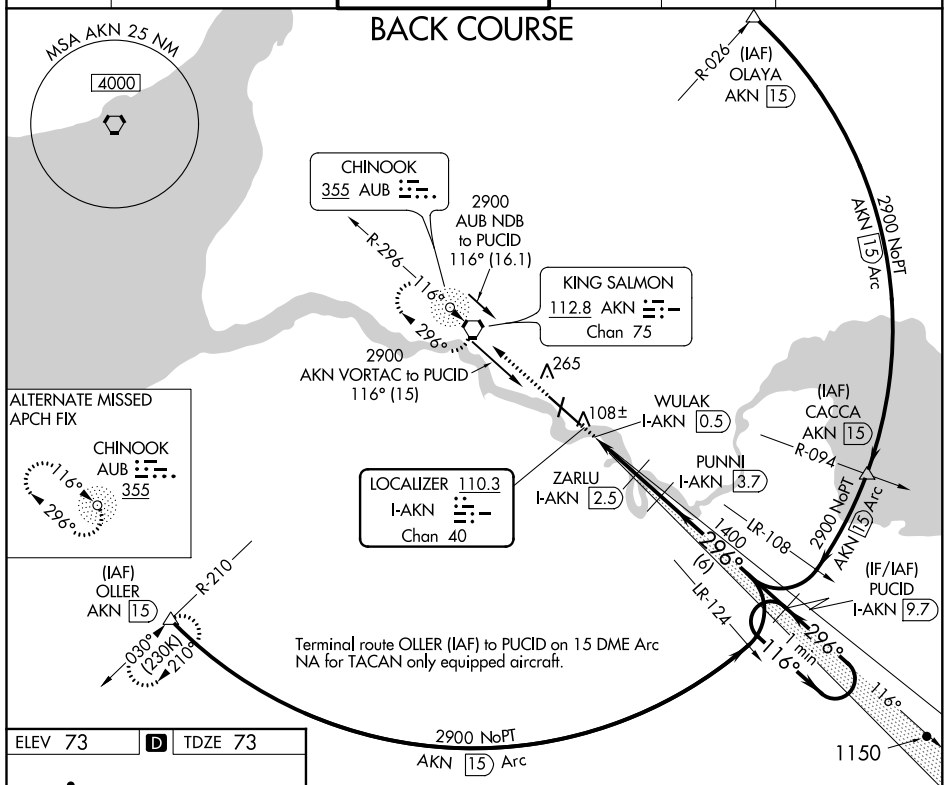

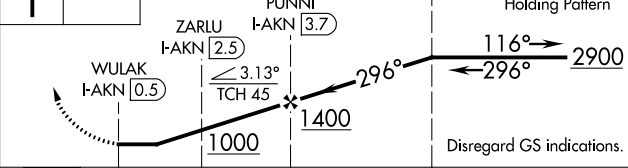


LOC/DME BC RWY 30
KING SALMON (AKN)(PAKN)

MISSED APPROACH: Climb to 3000 direct AKN VORTAC and hold, continue climb-in-hold to 3000. (TACAN AIRCRAFT climb to 500 then climbing left turn to 3000 on heading 230° and on AKN VORTAC R-210 to OLLER/15 DME and hold SW, right turn, 030° inbound).

ATIS 128.8	ANCHORAGE CENTER 124.8 354.0	KING SALMON TOWER* 118.3 279.5	GND CON 121.9	UNICOM 122.95	CTAF 121.90 352.05
---------------	---------------------------------	-----------------------------------	------------------	------------------	-----------------------



3000 ↑	AKN 	Use I-AKN DME when on the localizer course.					PUCID I-AKN 9.7	One Minute Holding Pattern	
									
CATEGORY	A		B		C		D		E
S-30	360-1 287 (300-1)								
CIRCLING	580-1	507 (600-1)	580-1½ 507 (600-1½)		640-2 567 (600-2)	880-2¾ 807 (900-2¾)			

AK, 05 NOV 2020 to 31 DEC 2020