

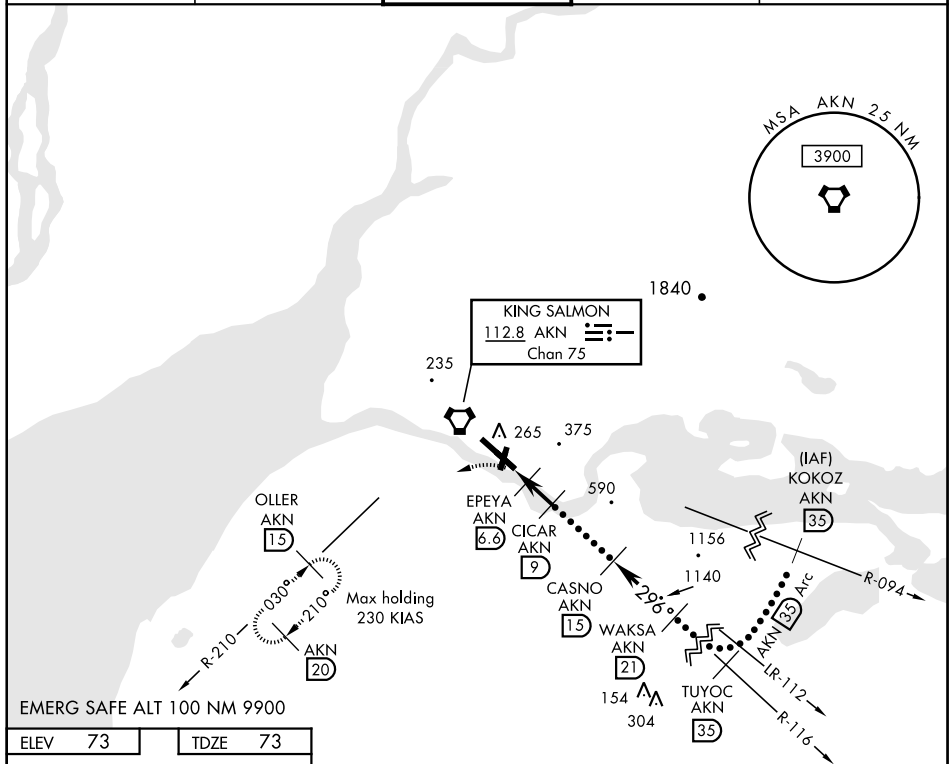
HI-VOR/DME or TACAN RWY 30

VORTAC AKN <b>112.8</b> Chan <b>75</b>	APCH CRS <b>296°</b>	Rwy Idg <b>8901</b> TDZE <b>73</b> Arpt Elev <b>73</b>
--	-------------------------	--

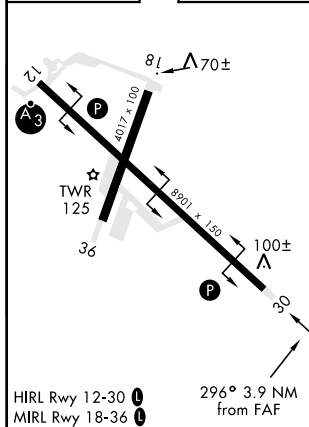
KING SALMON (PAKN)

	<p>MISSED APPROACH: Climb to 500, then climbing left turn to 3000 via heading 222° and AKN VORTAC R-210 to OLLER/ AKN 1.5 DME and hold.</p>
---	---

ATIS 128.8	ANCHORAGE CENTER 124.8 354.0	KING SALMON TOWER★ 118.3 279.5	GND CON 121.9	CTAF 121.9 0 352.05
---------------	---------------------------------	-----------------------------------	------------------	------------------------



ELEV	73		TDZE	73
------	----	--	------	----



CATEGORY	C	D	E
S-30	420-1 347 (400-1)	420-1 ¼	347 (400-1 ¼)
CIRCLING	580-1 ½ 507 (600-1 ½)	640-2 567 (600-2)	720-2 ¼ 647 (800-2 ¼)

KING SALMON (PAKN)

Amdt 4 19171

HI-VOR/DME or TACAN RWY 30

AK, 03 DEC 2020 to 31 DEC 2020

AK, 03 DEC 2020 to 31 DEC 2020