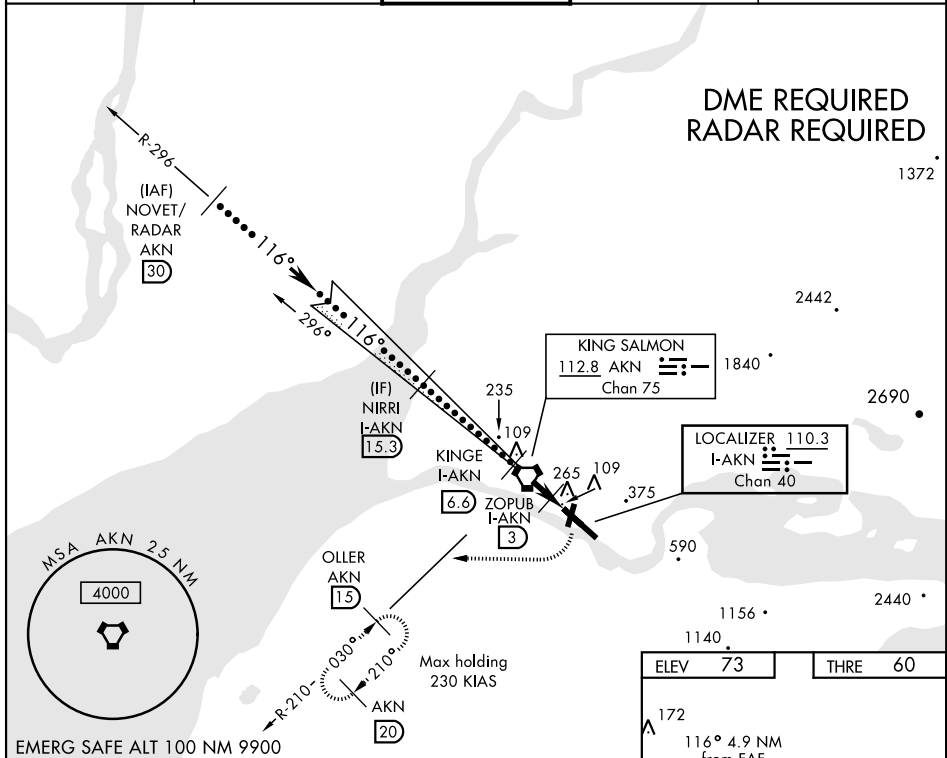


LOC/DME I-AKN 110.3 Chan 40	APCH CRS 116°	Rwy Idg THRE Arpt Elev 8901 60 73	JAL-1237 [USAF]	KING SALMON (PAKN)
⚠ *When ALS inop, increase CAT CDE vis to ¾ mile. ** When ALS inop, increase CAT CDE vis to ¾ mile. Autopilot coupled approaches not authorized below 500' MSL.			SSALR A3	MISSED APPROACH: Climb to 500', then climbing right turn to 3000' via heading 240° and AKN VORTAC R-210 to OLLER/AKN 15 DME and hold.

ATIS 128.8	ANCHORAGE CENTER 124.8 354.0	KING SALMON TOWER★ 118.3 279.5	GND CON 121.9	CTAF 121.9 0 352.05
----------------------	--	--	-------------------------	-------------------------------



VGS1 and ILS glidepath not coincident		500	3000	Intcp AKN R-210	OLLER AKN 15
NOVET/RADAR R-296 FL200 30	Intcp Lczt NIRRI I-AKN 15.3	KING I-AKN 6.6	ZOPUB I-AKN 3	I-AKN 2.4	I-AKN 1.6
GS 3.00° TCH 66		Use I-AKN DME when on localizer course			
3.6 NM		1.3 NM			
CATEGORY	C	D	E		
S-ILS 12 *	260-½	200 (200-½)			
S-LOC 12 **	360-½	300 (300-½)			
CIRCLING	580-1½ 507 (600-1½)	640-2 567 (600-2)	880-2¾ 807 (900-2¾)		