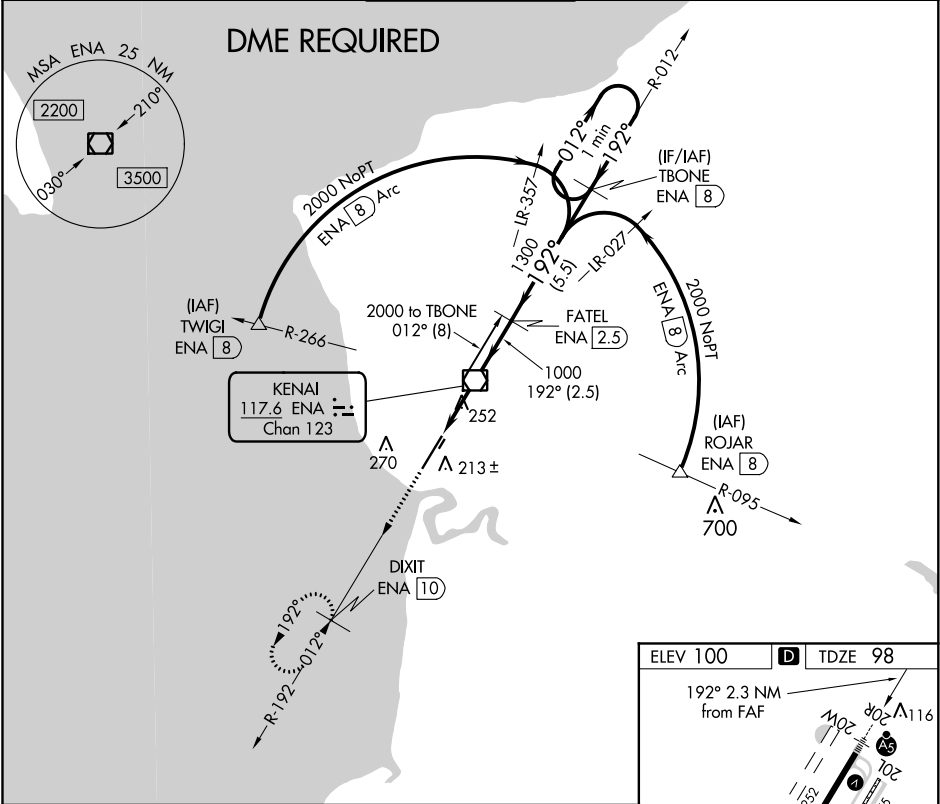


VOR/DME ENA	APP CRS	Rwy Idg	7575
117.6	192°	TDZE	98
Chan 123		Apt Elev	100

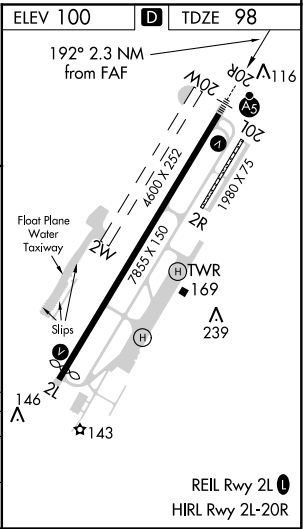
VOR RWY 20R
KENAI MUNI (ENA) (PAEN)

<p>A</p> <p>◉ -31°C</p> <p>Circling Rwy 2R, 20L NA at night. DME required. VDP NA when using Saldoina altimeter setting. When local altimeter setting not received, use Saldoina altimeter setting and increase all MDA 40 feet, increase S-20R Cats C and D visibility to RVR 5000. Circling Rwy 2W, 20W NA.</p>	<p>MALSR</p> <p>AS</p> <p>MISSED APPROACH: Climb to 2200 on ENA VOR/DME R-192 to DIXIT/ENA VOR/DME 10 DME and hold.</p>
--	--

ATIS 133.35	ANCHORAGE CENTER 125.7 379.1	KENAI TOWER★ 121.3 (CTAF) 239.3	GND CON 118.75	KENAI RADIO 122.65
----------------	---------------------------------	------------------------------------	-------------------	-----------------------



2200 ↑ ENA R-192	DIXIT ENA 10	VGSI and descent angles not coincident (VGSI Angle 3.00/TCH 51).				TBONE ENA 8	One Minute Holding Pattern
ENA 2.3	ENA 1.2	ENA VOR/DME	FATEL ENA 2.5	1000	1300	2000	
1.2		1.2	2.5 NM	5.5 NM			
CATEGORY	A	B	C	D			
S-20R	520/24	422 (500-½)	520/40	422 (500-¾)			
CIRCLING	560-1 460 (500-1)	580-1 480 (500-1)	580-1½ 480 (500-½)	680-2 580 (600-2)			



AK, 05 NOV 2020 to 31 DEC 2020

AK, 05 NOV 2020 to 31 DEC 2020