


APP CRS	Rwy Idg 11050
200°	TDZE 439
	Apt Elev 439

RNAV (RNP) Z RWY 20R
FAIRBANKS INTL (FAI) (PAFA)

 -32°C For uncompensated Baro-VNAV systems, procedure NA below -18°C (0°F) or above 54°C (130°F). RF and GPS required.
For inop ALS, increase RNP 0.10 all Cats visibility to RVR 5000.

MALSR

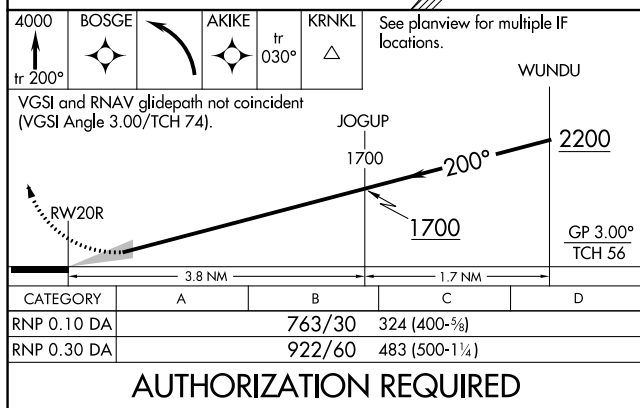
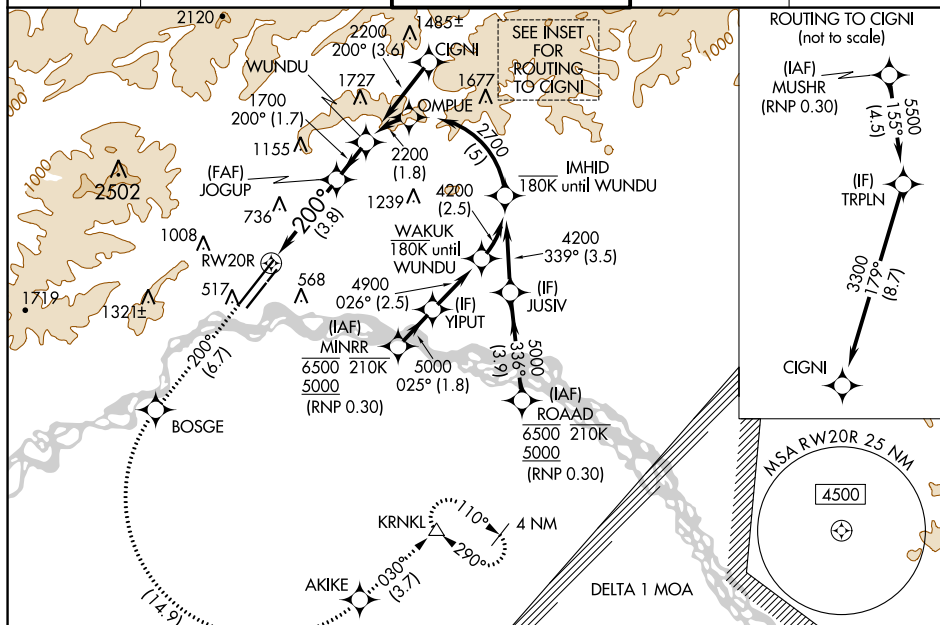
MISSED APPROACH: Climb to 4000 on track 200° to BOSGE then left turn to AKIKE and on track 030° to KRNKL and hold.

ATIS
124.4

FAIRBANKS APP CON
125.35 363.2

FAIRBANKS TOWER
118.3 257.8

GND CON
121.9

CLNC DEL
127-6

FAIRBANKS, ALASKA
Amdt 1 22JUN17

64°49'N-147°51'W

FAIRBANKS INTL (FAI) (PAFA)
RNAV (RNP) Z RWY 20R

