



LOC/DME I-OME <b>108.7</b> Chan <b>24</b>	APP CRS <b>099°</b>	Rwy Idg <b>6009</b> TDZE <b>16</b> Apt Elev <b>38</b>
---	------------------------	---

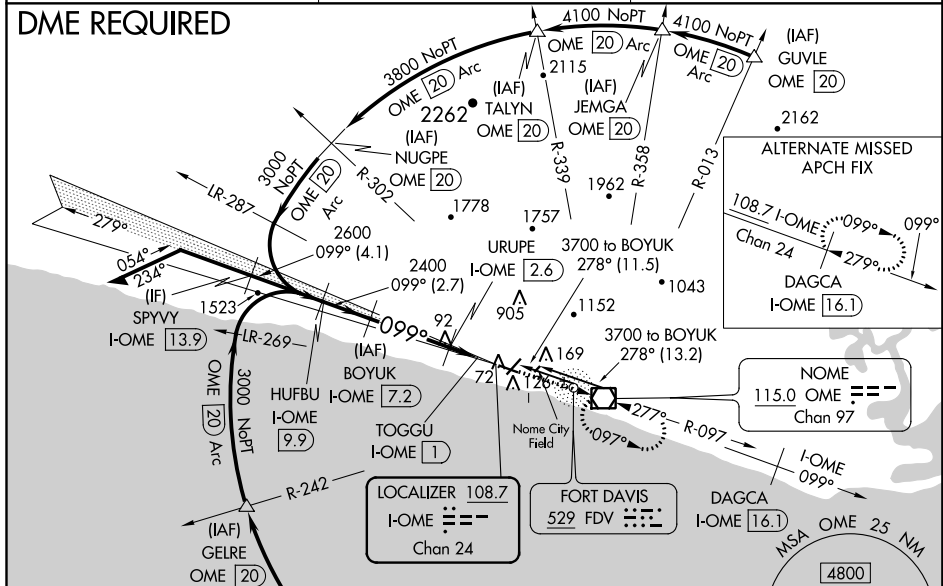
LOC/DME BC RWY 10  
NOME (OME) (PAOM)

 LOC BC unusable inside TOGGU/I-OME 1 DME. Night landing:  
 -34°C Rwy 10 operational VGSI required, remain on or above VGSI  
glidepath until threshold. Night landing: Rwy 21 NA. Circling  
NA for Cats C and D north of Rwy 10-28.

**MISSED APPROACH:** Climb to 3000  
direct OME VOR/DME and hold,  
continue climb-in-hold to 3000.

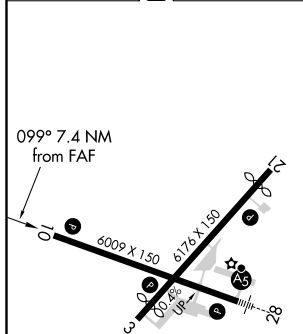
AFIS <b>119.925</b>	ANCHORAGE CENTER <b>133.3 290.4</b>	NOME RADIO <b>123.6 (CTAF) 0</b>
------------------------	--	-------------------------------------

## DME REQUIRED



## BACK COURSE

ELEV	38	<b>D</b>	TDZE	16
------	----	----------	------	----



MIRL Rwy 3-21 **L**  
HIRL Rwy 10-28 **L**  
REIL Rwy 3 and 10 **L**

NOME, ALASKA  
Amdt 4 13NOV14

64°31'N-165°27'W

NOME (OME) (PAOM)  
LOC/DME BC RWY 10