

LOC/DME I-OME	APP CRS	Rwy Idg	6009
108.7	279°	TDZE	22
Chan 24		Apt Elev	38

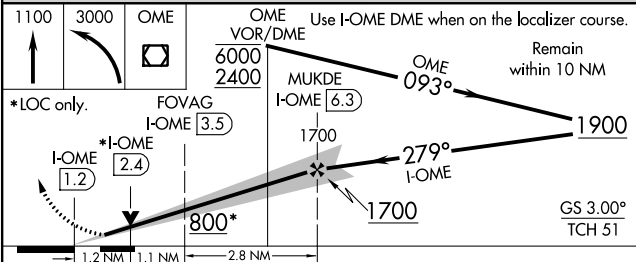
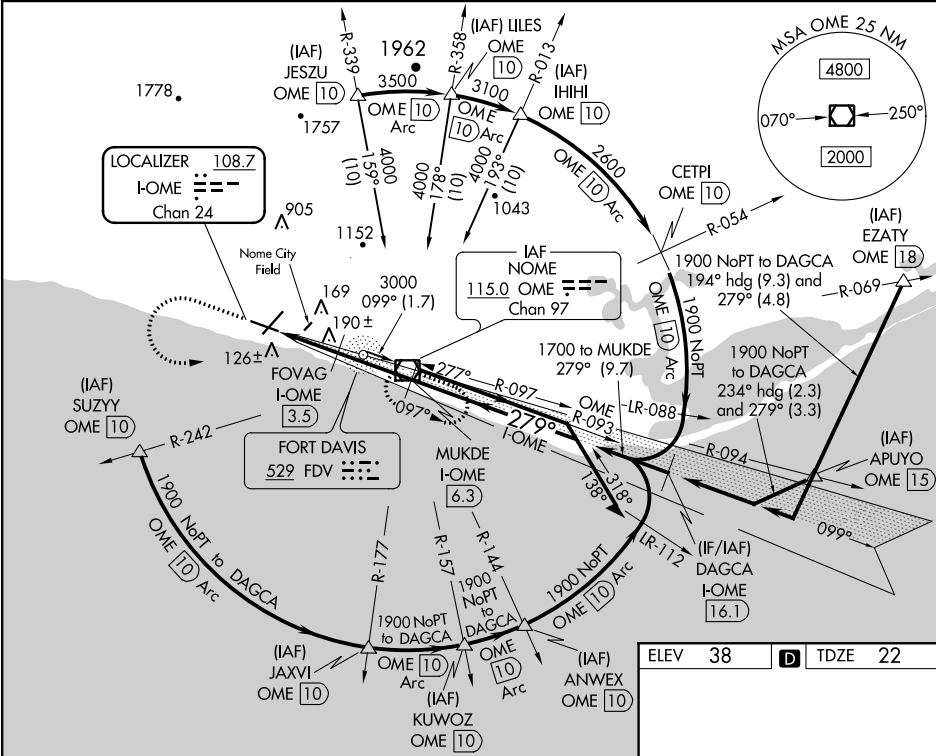
ILS Z or LOC Z RWY 28
NOME(OME)(PAOM)

⚠ DME required. Circling Rwy 21 NA at night. Circling NA for Cats C and D north of Rwy 10-28. Inop table does not apply to S-ILS 28 all Cats and S-LOC 28 Cats A and B. For inop ALS, increase S-LOC 28 Cats C and D to RVR 6000.

MALS

⚠ MISSED APPROACH: Climb to 1100 then climbing left turn to 3000 direct OME VOR/DME and hold, continue climb-in-hold to 3000.

AFIS 119.925	ANCHORAGE CENTER 133.3 290.4	NOME RADIO 123.6 (CTAF) 0
------------------------	--	-------------------------------------



ELEV 38	TDZE 22
---------	---------

REIL Rwy 3 and 10 0
HIRL Rwy 10-28 0
MIRL Rwy 3-21 0

279° 5.1 NM from FAF

CATEGORY	A	B	C	D
S-ILS 28		272/50	250 (300-1)	
S-LOC 28		440/50	418 (500-1)	
CIRCLING	540-1	502 (600-1)	540-1½ 502 (600-1½)	700-2 662 (700-2)

AK, 05 NOV 2020 to 31 DEC 2020

AK, 05 NOV 2020 to 31 DEC 2020