

| | | | |
|---------------|---------|----------|------|
| LOC/DME I-OME | APP CRS | Rwy Idg | 6009 |
| 108.7 | 279° | TDZE | 25 |
| Chan 24 | | Apt Elev | 41 |

ILS Y or LOC Y RWY 28
NOME (OME)(PAOM)

RNAV 1-GPS required. DME required.

▼

▲

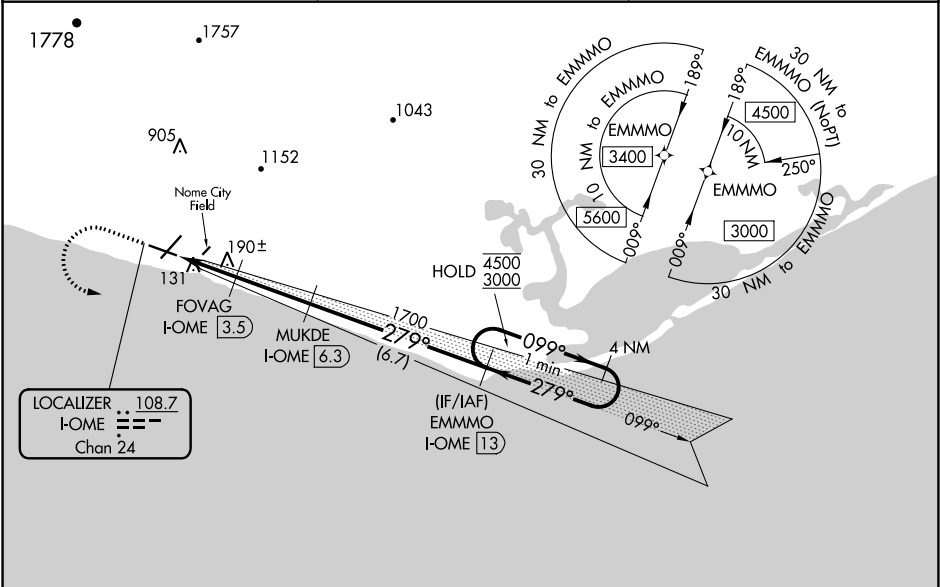
☼

Circling Rwy 21 NA at night. Rwy 28 helicopter visibility reduction below RVR 4000 NA. For inop ALS, increase S-LOC 28 Cats A/B visibility to RVR 5500 and Cats C/D visibility to RVR 6000. Inop table does not apply to S-ILS Rwy 28. Circling NA for Cats C and D north of Rwy 10-28.

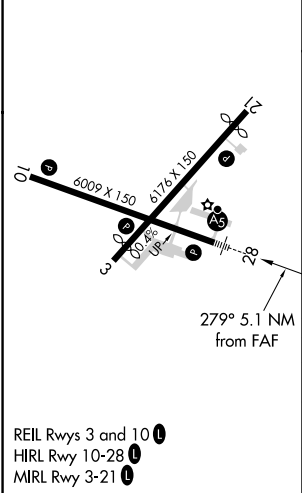
MALSR

MISSED APPROACH: Climb to 1300 then climbing left turn to 3000 direct EMMMO and hold.

| | | |
|-----------------|---------------------------------|------------------------------|
| AFIS 119.925 | ANCHORAGE CENTER 133.3 290.4 | NOME RADIO 123.6 (CTAF) 1 |
|-----------------|---------------------------------|------------------------------|



| | | |
|---------|---|---------|
| ELEV 41 | D | TDZE 25 |
|---------|---|---------|



| | | | | | |
|-------------|-------------------|----------------|---|----------------|------------------------------------|
| 1300 | 3000 | EMMMO I-OME 13 | Use I-OME DME when on localizer course. | EMMMO I-OME 13 | One Minute or 4 NM Holding Pattern |
| * LOC only. | | | | | |
| | | | | | |
| CATEGORY | A | B | C | D | |
| S-ILS 28 | 275/40 | | 250 (300-¾) | | |
| S-LOC 28 | 440/40 | | 415 (400-¾) | | |
| CIRCLING | 540-1 499 (500-1) | | 540-1½ 499 (500-1½) | | 700-2 659 (700-2) |