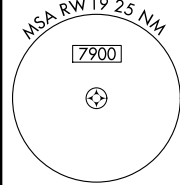
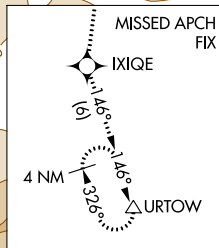
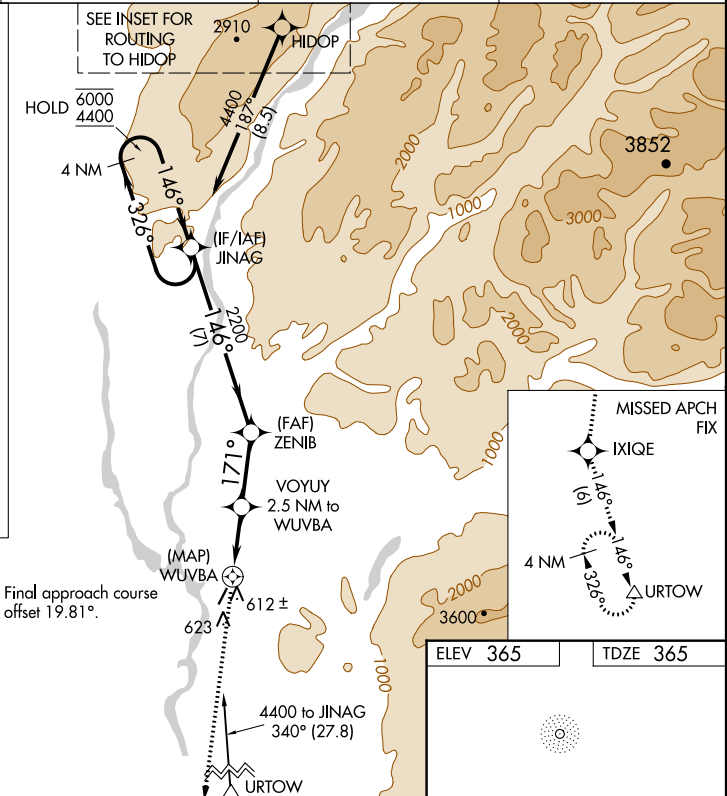
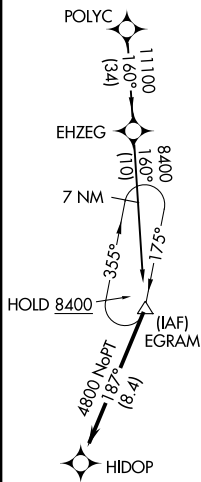


RNAV (GPS) RWY 19
TALKEETNA(TKA)(PATK)

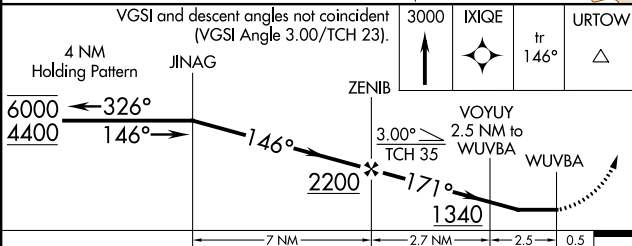
MISSED APPROACH: Climb to 3000 direct IXQE and on track 146° to URTOW and hold.


AFIS 135.2	ANCHORAGE CENTER 125.55 254.3	TALKEETNA RADIO 123.6 (CTAF) 0	UNICOM 123.0
----------------------	---	---	------------------------

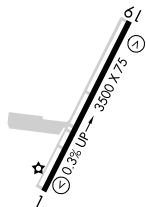
ROUTING TO HIDOP
(not to scale)



VGSI and descent angles not coincident
(VGSI Angle 3.00/TCH 23).



CATEGORY	A	B	C	D
LNAV MDA	880-1	515 (600-1)	880-1 $\frac{3}{8}$	515 (600-1 $\frac{3}{8}$)
 CIRCLING	880-1	515 (600-1)	1040-2 675 (700-2)	1200-2 $\frac{3}{4}$ 835 (900-2 $\frac{3}{4}$)

MIRL Rwy 1-19 **L**