

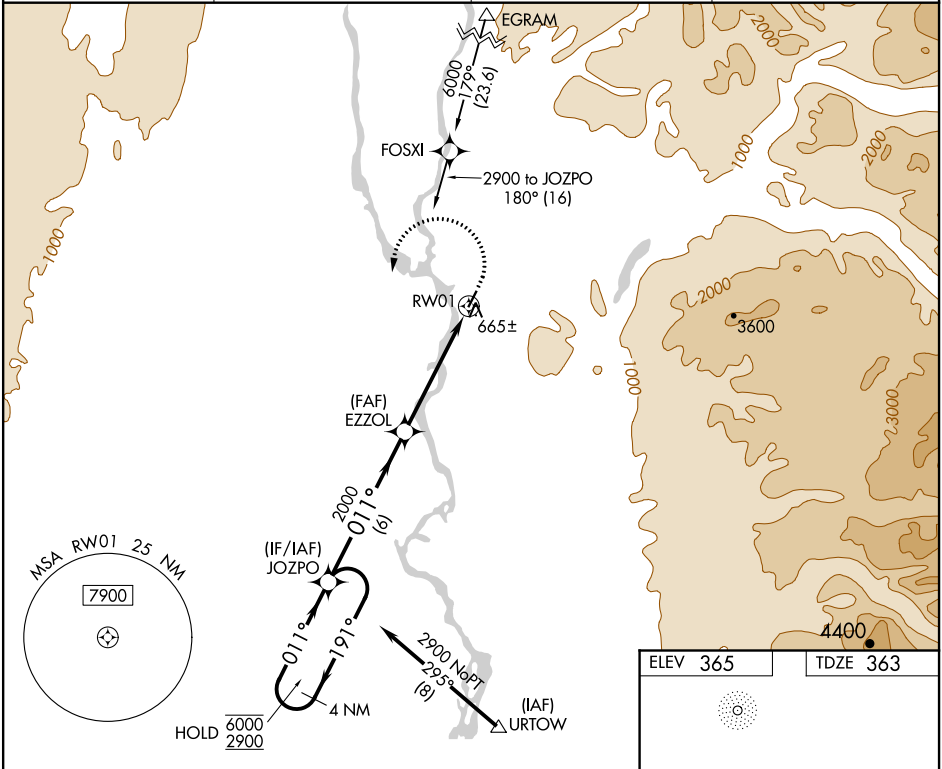
APP CRS	Rwy Idg	3500
011°	TDZE	363
	Apt Elev	365

RNAV (GPS) RWY 1

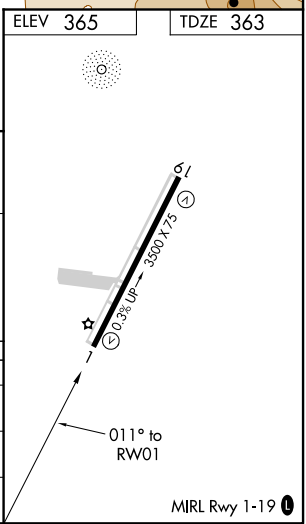
TALKEETNA(TKA)(PATK)

RNP APCH.	MISSED APPROACH: Climb to 800 then climbing left turn to 2900 direct JOZPO and hold.
Circling NA east of Rwy 1-19. Rwy 1 helicopter visibility reduction below ¾ SM NA. For uncompensated Baro-VNAV systems, LNAV/VNAV NA below -20°C or above 54°C.	

AFIS 135.2	ANCHORAGE CENTER 125.55 254.3	TALKEETNA RADIO 123.6 (CTAF) 0	UNICOM 123.0
---------------	----------------------------------	-----------------------------------	-----------------



4 NM Holding Pattern		VGSI and RNAV glidepath not coincident (VGSI Angle 3.00/TCH 23).		800	2900	JOZPO
6000 ← 191°		2900 → 011°		011°		2000
GP 3.00°		TCH 45		* 1.7 NM to RW01		* LNAV only
6 NM		3.3 NM		1.7 NM		
CATEGORY	A	B	C	D		
LNAV/VNAV DA	922-2 559 (600-2)					
LNAV MDA	920-1	557 (600-1)	920-1½	557 (600-1½)		
CIRCLING	960-1	595 (600-1)	1040-2	1200-2¾	675 (700-2) 835 (900-2¾)	



AK, 05 NOV 2020 to 31 DEC 2020

AK, 05 NOV 2020 to 31 DEC 2020