

WAAS CH 40343 W33A	APP CRS 334°	Rwy Idg 5001 TDZE 1573 Apt Elev 1586
--	------------------------	---

RNAV (GPS) RWY 33R
GULKANA (GKN) (PAGK)

RNP APCH

T Circling Rwy 15R, 33L NA at night. Rwy 33R helicopter visibility reduction below $\frac{3}{4}$ SM NA. For uncompensated Baro-VNAV systems, LNAV/VNAV NA below -25°C or above 54°C.

MISSED APPROACH: Climb to 2100 then climbing left turn to 7000 direct SMOKY and hold, continue climb-in-hold to 7000.

ASOS 134.85	ANCHORAGE CENTER 119.5 317.5	CTAF 122.9 0
-----------------------	--	------------------------

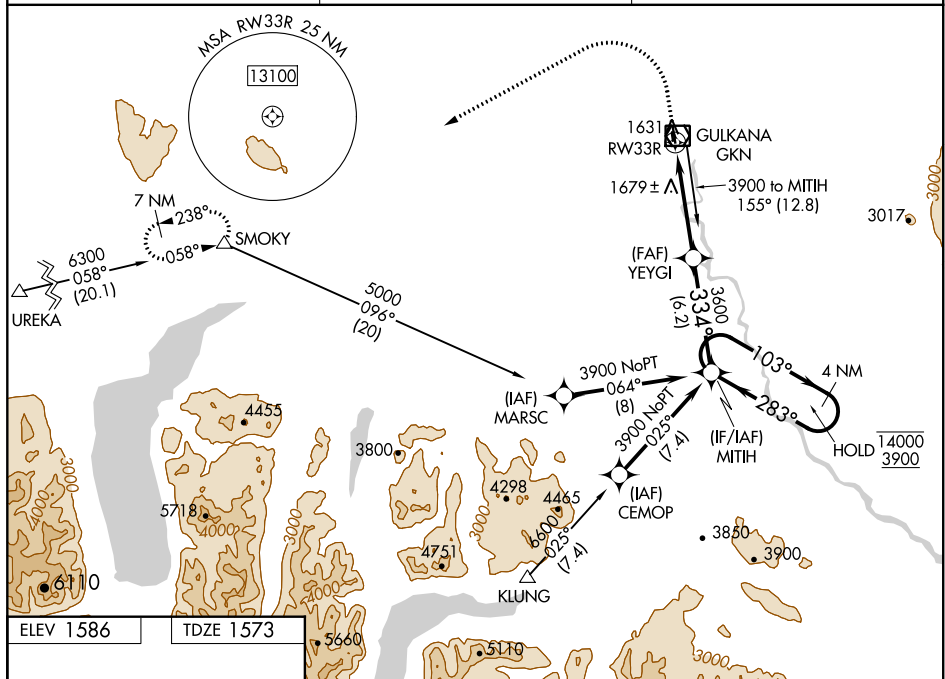


Diagram illustrating the VGS1 and RNAV glidepath not coincident (VGS1 Angle 3.00/TCH 29).

Key parameters and distances shown:

- 4 NM Holding Pattern
- 103° / 283°
- 3600
- 334°
- 3600
- 14000 / 3900
- GP 3.00° TCH 50
- Distances: 1.3 NM, 5 NM, 6.2 NM
- Labels: YEYGI, MITIH, RW33R, SMOKY, 2100, 7000
- Note: *LNAV only.
- Note: *1.3 NM to RW33R

GULKANA, ALASKA
Orig 16JUL20

GULKANA (GKN) (PAGK)
RNAV (GPS) RWY 33R

62°09'N-145°27'W

AK, 05 NOV 2020 to 31 DEC 2020

AK, 05 NOV 2020 to 31 DEC 2020