

VOR/DME or TACAN RWY 19

VORTAC BIG <b>114.9</b> Chan <b>96</b>	APCH CRS <b>197°</b>	Rwy Idg <b>8000</b> TDZE <b>1239</b> Arpt Elev <b>1285</b>
----------------------------------------------	-------------------------	------------------------------------------------------------------

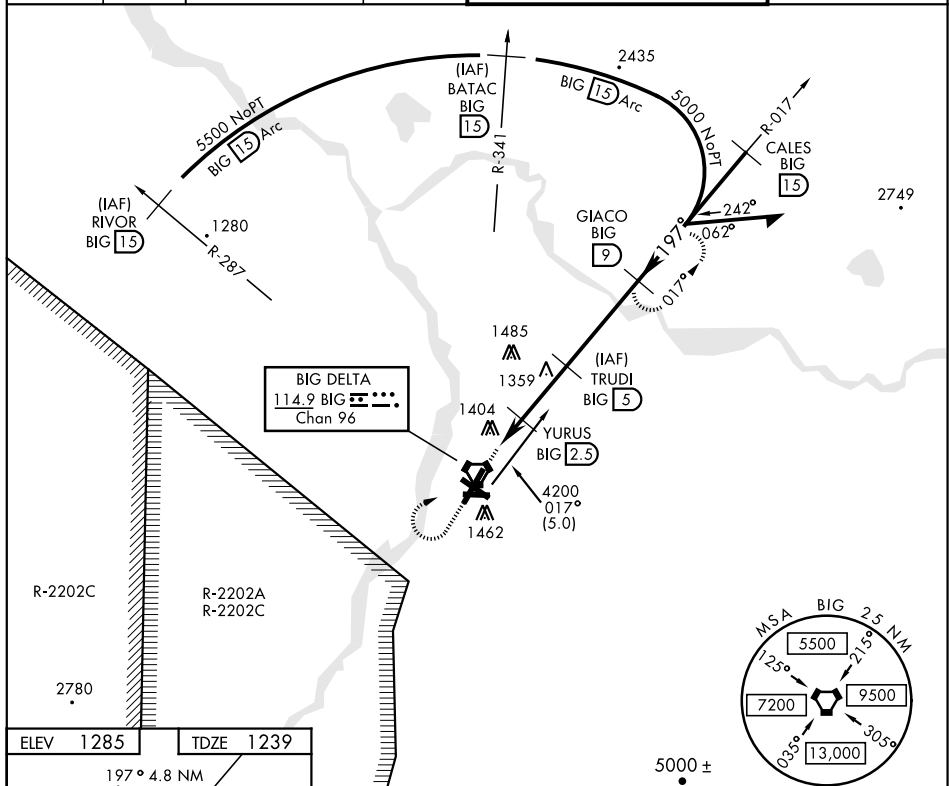
AL-1218 [USA]

ALLEN AAF (PABI)

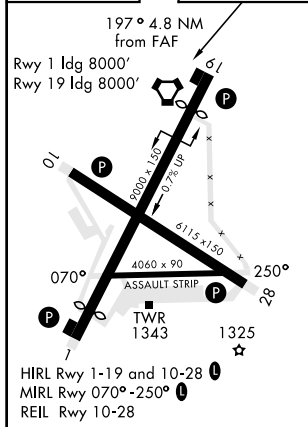
**T** \*Circling not authorized East of Rwy 1-19.

**MISSED APPROACH:** Climb to 2100, then climbing right turn to 4000 via BIG R-017 to GIACO/9 DME and hold.

ATIS 132.075	ASOS 135.65	ANCHORAGE CENTER 135.3 322.5	CTAF 122.9 0	ALLEN TOWER ★ 119.8 235.775 40.8 (E) FM	GND CON 118.225 251.05
-----------------	----------------	---------------------------------	-----------------	--------------------------------------------	---------------------------



ELEV	1285		TDZE	1239
------	------	--	------	------



VGSJ and descent angles not coincident.

CATEGORY	A	B	C	D
S- 19	1660-1 421 (400-1)		1660-1¼ 421 (400-1¼)	
CIRCLING *	1720-1 435 (500-1)	1760-1 475 (500-1)	1760-1½ 475 (500-1½)	1860-2 575 (600-2)

DELTA JUNCTION/FORT GREELY, ALASKA

64°00'N-145°43'W

ALLEN AAF (PABI)

Amdt 2B 19339

VOR/DME or TACAN RWY 19

AK, 03 DEC 2020 to 31 DEC 2020