

TACAN Y RWY 16

TACAN	EDF	APCH CRS	Rwy Idg	7493
Chan	81	133°	TDZE	213
			Arpt Elev	213

AL-1196 [USAF]

ELMENDORF AFB (PAED)

★ Circling not authorized SW of Rwy 6 and 34.
CAT E aircraft remain within 4.5 NM of runway when executing circling maneuver.

† MISSED APPROACH: Climbing left turn to 6000 via EDF
R-313 to LUBEE and hold. Continue climb-in-hold to 6000.

ATIS ★	ANCHORAGE APP CON	ELMENDORF TOWER	GND CON	CLNC DEL	PAR
124.3 273.5	North 118.6 290.5 South 123.8 259.3	127.2 352.05	121.8 275.8	128.8 306.925	

Knots	60	120	180	240	300	360
V/V(fpm)	476	952	1428	1904	2380	2856

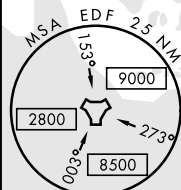
MISSED APPROACH NOT FOR CIVIL USE

R-313
Max holding alt 8000
Min holding alt 6000
EDF 25
133°
EDF 17
133°
CEGEN EDF 12

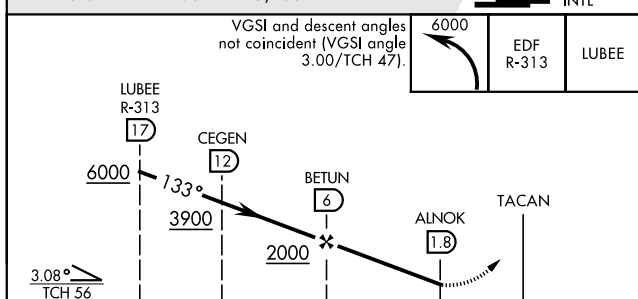
Controlling Obstacle 2088

† CAUTION: Missed Approach
minimum climb to 3900.

- CAUTION:
Terrain rises rapidly to the S and E.
-Winds in vicinity of higher terrain may produce severe turbulence.
-Uncontrolled light aircraft operations in the vicinity of Six-mile lake at or below 600.



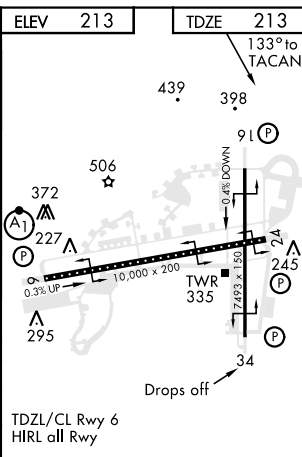
EMERG SAFE ALT 100 NM 15,200



VGSI and descent angles
not coincident (VGSI angle
3.00/TCH 47).

6000	EDF R-313	LUBEE
------	-----------	-------

CATEGORY	A	B	C	D	E
S-16 †					680-138 467 (500-138)
CIRCLING ★					1420-3 1207 (1300-3)



TDZL/CL Rwy 6
HIRL all Rwy

TACAN Y RWY 16