

TACAN RWY 6

TACAN	EDF	APCH CRS	Rwy ldg	10,000
Chan	81	062°	TDZE	174
			Arprt Elev	213

AL-1196 [USAF]

ELMENDORF AFB (PAED)

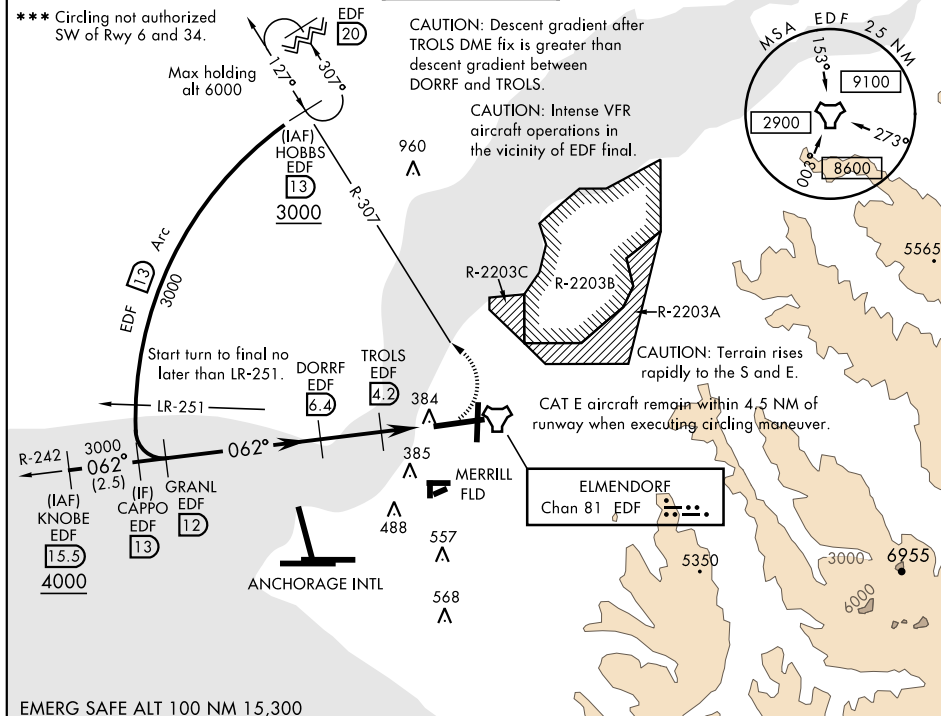
▼ * When ALS inop, increase CAT AB RVR to 55, vis to 1 mile, CAT CDE vis to 1½ miles.
 ** Circling not authorized S of Rwy 6-24.



MISSED APPROACH: Climbing left turn to 3000 via EDF R-307 to HOBBS and hold. Continue climb in hold to 3000.

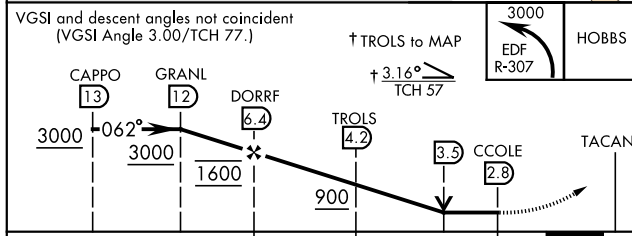
ATIS ★	ANCHORAGE APP CON	ELMENDORF TOWER	GND CON	CLNC DEL	PAR
124.3 273.5	118.6 290.5 North 123.8 259.3 South	127.2 352.05	121.8 275.8	128.8 306.925	

*** Circling not authorized SW of Rwy 6 and 34.

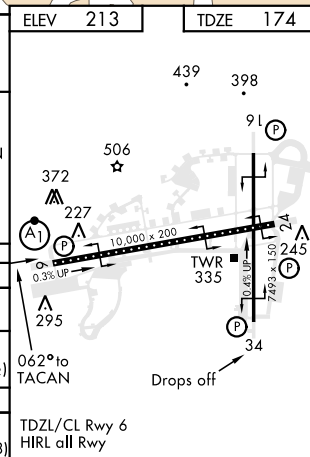


EMERG SAFE ALT 100 NM 15,300

VGSI and descent angles not coincident (VGSI Angle 3.00/TCH 77.)



CATEGORY	A	B	C	D	E
S-6 *	640/24	466 (500-½)	640/50	466	(500-1)
CIRCLING **	800-1	587 (600-1)	800-1½ 587 (600-1½)	820-2 607 (700-2)	940-2½ 727 (800-2½)
RWY 34 CIRCLING MINIMUMS					
CIRCLING ***	800-1	587 (600-1)	920-2 707 (800-2)	1020-2½ 807 (900-2½)	1480-3 1267 (1300-3)



TACAN RWY 6