

ANCHORAGE, ALASKA

RNAV (GPS) RWY 6

APCH CRS	Rwy Idg	10,000
062°	TDZE	175
	Arpt Elev	213

AL-1196 (USAF)

ELMENDORF AFB (PAED)

▼ \* When ALS inop increase RVR to 60, vis to 1 1/8 miles.  
\*\* When ALS inop increase CAT AB RVR to 55, vis to 1 mile, CAT CD vis to 1 3/8 miles.  
\*\*\* Circling NA SW of Rwy 6 and 34.

ALSF-1 MISSED APPROACH: Climb to 800 then climbing left turn to 3000 direct BGQ and hold.

ATIS★	ANCHORAGE APP CON/DEP CON	TOWER	GND CON	CLNC DEL	ASR/PAR
124.3 273.5	118.6 290.5	127.2 352.05	121.8 275.8	128.8 306.925	

DME/DME RNP-0.3 NA

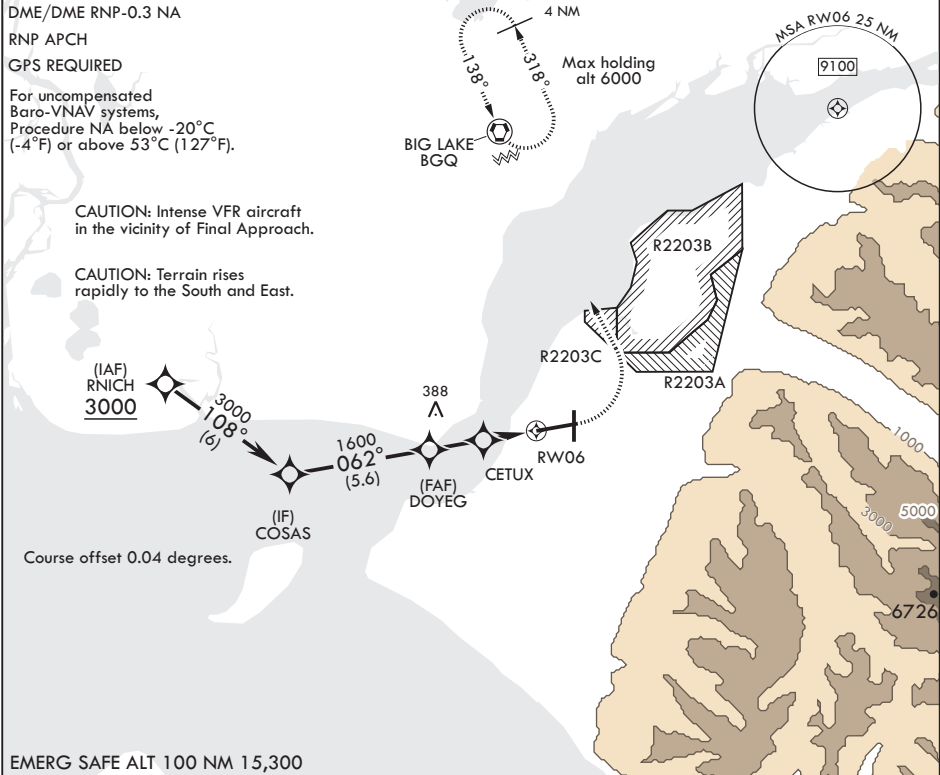
RNP APCH

GPS REQUIRED

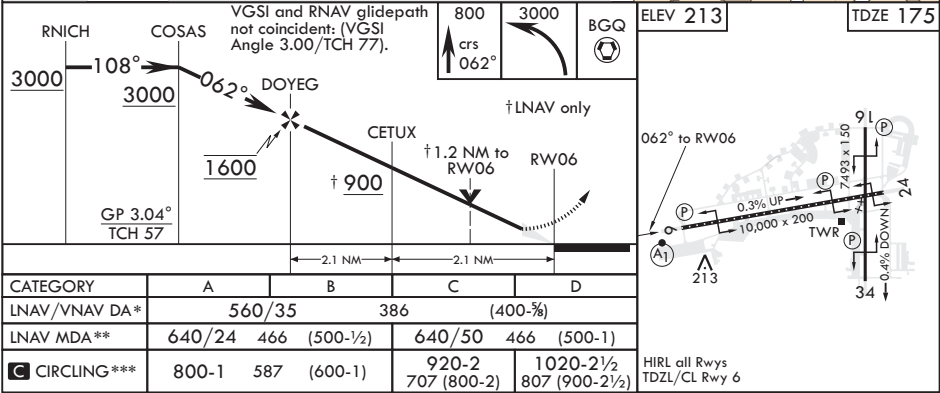
For uncompensated Baro-VNAV systems, Procedure NA below -20°C (-4°F) or above 53°C (127°F).

CAUTION: Intense VFR aircraft in the vicinity of Final Approach.

CAUTION: Terrain rises rapidly to the South and East.



EMERG SAFE ALT 100 NM 15,300



ANCHORAGE, ALASKA

61°15'N - 149°48'W

ELMENDORF AFB (PAED)

Amndt 2 05NOV20

RNAV (GPS) RWY 6

AK, 03 DEC 2020 to 31 DEC 2020

AK, 03 DEC 2020 to 31 DEC 2020