

18200

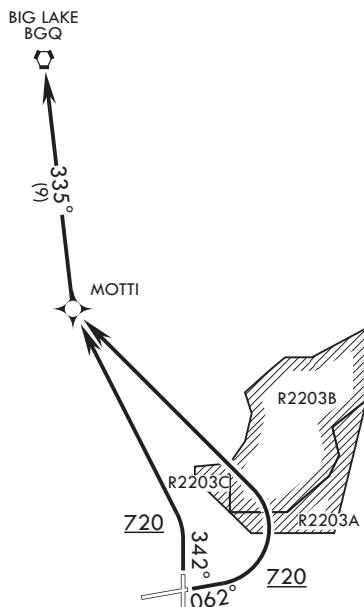
SL-1196 (USAF)

ELMENDORF AFB (PAED)

ELMENDORF TWO DEPARTURE (RNAV) (MOTTI2.BGQ)

ANCHORAGE, ALASKA

ATIS ★ 124.3 273.5
 CLNC DEL 128.8 306.925
 GND CON 121.8 275.8
 TOWER 127.2 352.05
 ANCHORAGE APP CON/DEP CON
 118.6 290.5



Rwy 6-34 not authorized
 if R-2203 active.

**RADAR
 REQUIRED**

**GPS and
 RNAV1
 REQUIRED**

(For non-GPS
 equipped aircraft)

**DEPARTURE ROUTE DESCRIPTION**

TAKE-OFF RWY 6: Climb heading 062° to 720, then turn left direct MOTTI, thence via 335° track to BGQ VORTAC at assigned altitude.

TAKE-OFF RWY 34: Climb heading 342° to 720, then turn left direct MOTTI, thence via 335° track to BGQ VORTAC at assigned altitude.

ELMENDORF TWO DEPARTURE (RNAV) (MOTTI2.BGQ)

ANCHORAGE, ALASKA

ELMENDORF AFB (PAED)

Orig 19JUL18

AK, 03 DEC 2020 to 31 DEC 2020