

VOR/DME YAK	APP CRS	Rwy Idg
113.3	308°	7732
Chan 80		TDZE 26
		Apt Elev 33

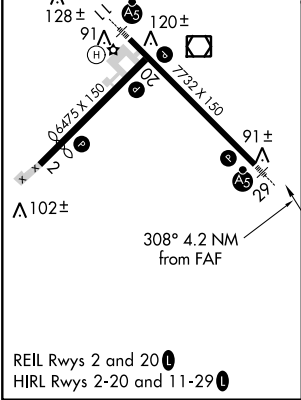
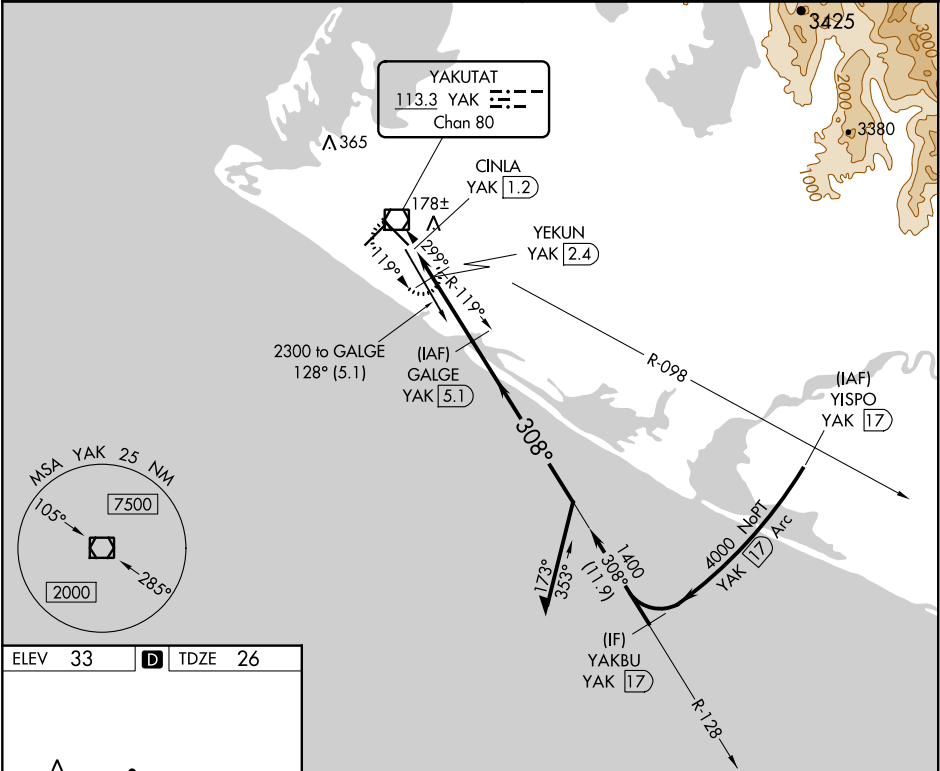
VOR/DME RWY 29
YAKUTAT (YAK) (PAYA)



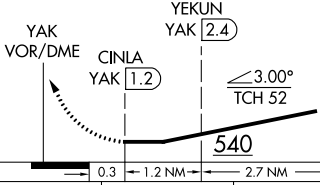

⚠ Inop table does not apply to Cats A/B.
⚠ For inop MALSR, increase Cats C/D visibility to 1½ mile.

MALSR

MISSED APPROACH: Climb to 2000 direct YAK
VOR/DME and hold, continue climb-in-hold to 2000.

ASOS 135.75	ANCHORAGE CENTER 119.0 263.1	JUNEAU RADIO 123.6 (CTAF) 0
-----------------------	--	---------------------------------------



2000	YAK	VGSI and descent angles not coincident (VGSI Angle 3.00/TCH 51).			
		Remain within 10 NM			
					
CATEGORY	A	B	C	D	
S-29	440-1 414 (500-1)				
 CIRCLING	500-1 467 (500-1)	520-1 487 (500-1)	620-1½ 587 (600-1½)	720-2¼ 687 (700-2¼)	