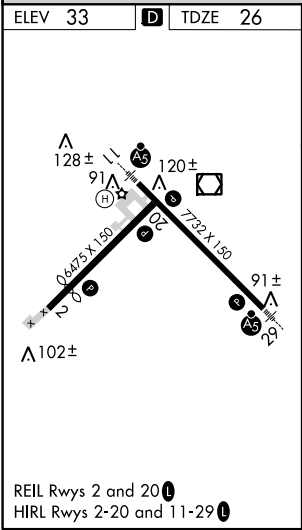
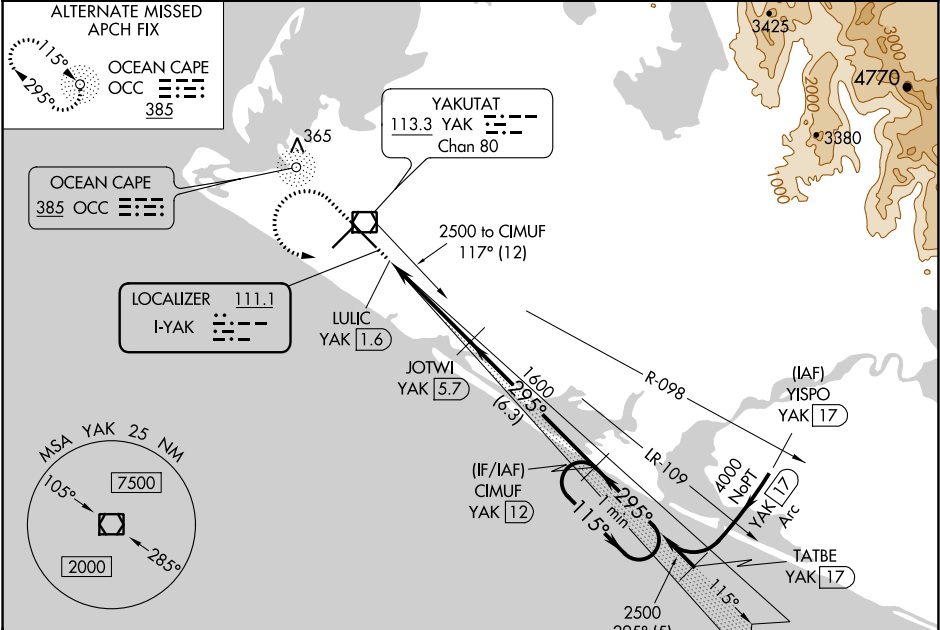


LOC I-YAK 111.1	APP CRS 295°	Rwy Idg 7732 TDZE 26 Apt Elev 33
---------------------------	------------------------	---

LOC/DME BC RWY 29
YAKUTAT (YAK) (PAYA)

<p>⚠ DME from YAK VOR/DME. Simultaneous reception of I-YAK and YAK DME required. Inop table does not apply to S-29 Cats A, B. For inop MALSR, increase S-29 Cat C/D visibility to 1 3/8 mile.</p>	<p>MALSR</p> <p>AS</p>	<p>MISSED APPROACH: Climb to 2000 then climbing left turn to 2500 to intercept YAK VOR/DME R-117 to CIMUF/YAK 12 DME and hold.</p>
ASOS 135.75	ANCHORAGE CENTER 119.0 263.1	JUNEAU RADIO 123.6 (CTAF) 0



BACK COURSE

