

LOC I-YAK 111.1	APP CRS 115°	Rwy Idg TDZE Apt Elev	7732 33 33
---------------------------	------------------------	-----------------------------	---------------------------------------

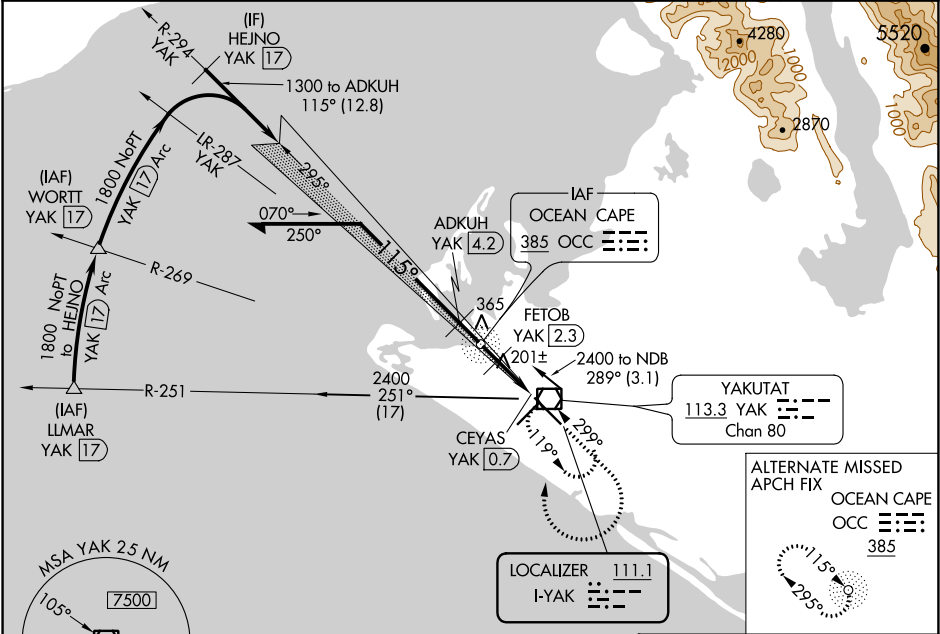
ILS or LOC/DME RWY 11
YAKUTAT (YAK) (PAYA)

⚠ DME from YAK VOR/DME, simultaneous reception of I-YAK and YAK DME required.

MALSR

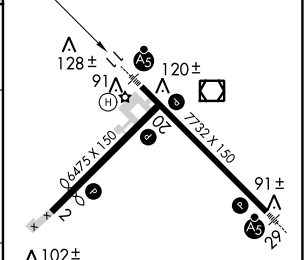
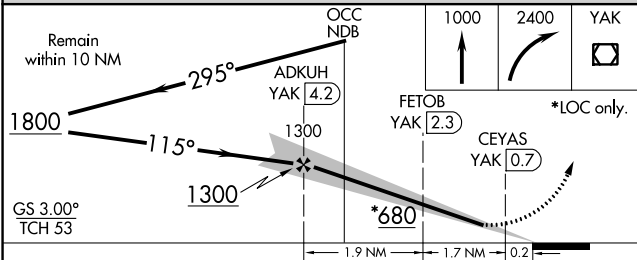
MISSED APPROACH: Climb to 1000 then climbing right turn to 2400 direct YAK VOR/DME and hold, continue climb-in-hold to 2400.

ASOS 135.75	ANCHORAGE CENTER 119.0 263.1	JUNEAU RADIO 123.6 (CTAF) 0
-----------------------	--	---------------------------------------



ADF or DME REQUIRED

ELEV 33 **D** TDZE 33



CATEGORY	A	B	C	D
S-ILS 11	233/24 200 (200-½)			
S-LOC 11	460/24	427 (500-½)	460/40	427 (500-¾)
C CIRCLING	500-1 467 (500-1)	520-1 487 (500-1)	620-1½ 587 (600-1½)	720-2¼ 687 (700-2¼)

REIL Rwy 2 and 20 0
HIRL Rwy 2-20 and 11-29 0