

JUNEAU FIVE DEPARTURE (OBSTACLE)

AL-1191 (FAA)

JUNEAU INTL (JNU)(PAJN)  
JUNEAU, ALASKA

ATIS  
135.2  
GND CON  
121.9  
JUNEAU TOWER\*  
118.7 (CTAF) 278.3  
ANCHORAGE CENTER  
133.9  
JUNEAU RADIO  
122.2

TAKEOFF MINIMUMS

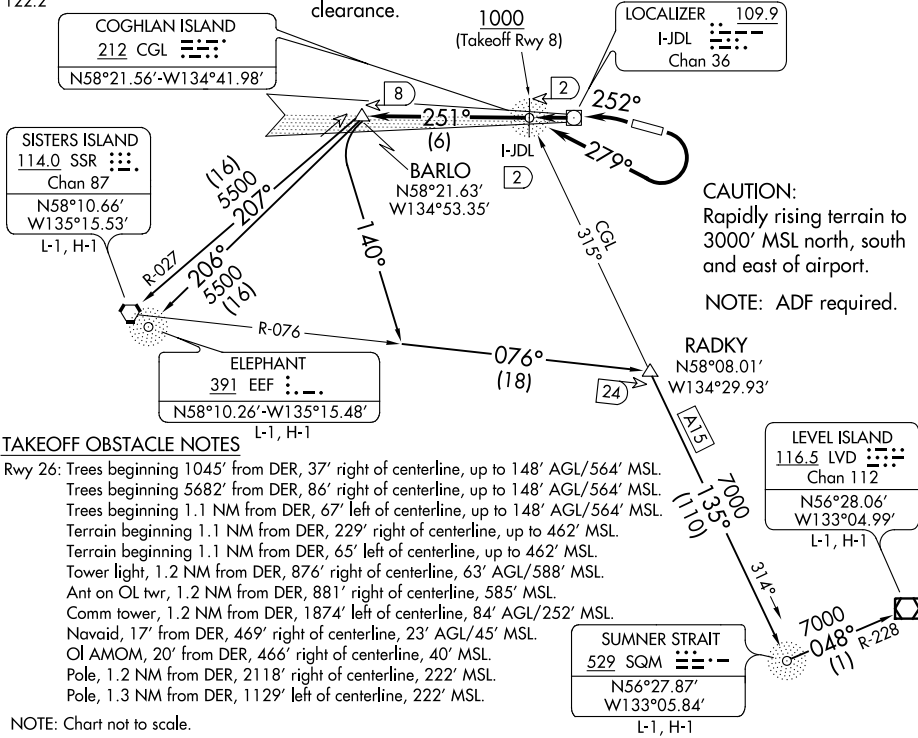
Rwy 8: 1000-3 with minimum climb from 1000 as stated per transition.

Rwy 26: Standard with minimum climb of 595' per NM to 800, then as stated per transition, or 600-2 with minimum as stated per transition.

NOTE: SSR/EEF transition: Minimum climb of 330' per NM to 2800.

LVD and SQM transitions: Minimum climb of 385' per NM to 4600'.

NOTE: Obtain ATC approval for this procedure if not issued as part of the IFR clearance.



DEPARTURE ROUTE DESCRIPTION

**TAKEOFF RUNWAY 8:** Climbing right turn as soon as practical. Climb in visual conditions direct CGL NDB or heading 279° to I-JDL West course/2 DME (visual conditions must be maintained from takeoff until established over CGL NDB or I-JDL West course/2 DME at or above 1000 MSL), thence. . .

**TAKEOFF RUNWAY 26:** Climbing left turn heading 252° to CGL NDB or I-JDL West course/2 DME, thence. . .

. . . via I-JDL West course or 251° bearing from CGL NDB to BARLO INT/I-JDL 8 DME, thence via (transition).

**LEVEL ISLAND TRANSITION (JNU5.LVD):** From over BARLO INT via heading 140° and SSR R-076 to RADKY INT, then via SQM bearing 314° to SQM NDB, then via SQM bearing 048° and LVD R-228 to LVD VOR/DME.

**SISTERS ISLAND/ELEPHANT TRANSITION (JNU5.SSR):** From over BARLO INT via SSR R-027 to SSR VORTAC, or from over BARLO INT via EEF bearing 026° to EEF NDB.

**SUMNER STRAIT TRANSITION (JNU5.SQM):** From over BARLO INT via heading 140° and SSR R-076 to RADKY INT, then via SQM bearing 314° to SQM NDB.

JUNEAU FIVE DEPARTURE (OBSTACLE)